



COUNTY OF LOS ANGELES
COUNTYWIDE
INTEGRATED
WASTE
MANAGEMENT
PLAN
2016 ANNUAL REPORT



COUNTY OF LOS ANGELES
DEPARTMENT OF PUBLIC WORKS

COUNTYWIDE SUMMARY PLAN
& COUNTYWIDE SITING ELEMENT
SEPTEMBER 2017

Purpose

- Provides an annual update to the Los Angeles County Countywide Integrated Waste Management Plan



County of Los Angeles CoIWMP, 2016 Annual Report
Public Works, Environmental Programs Division

Solid Waste Disposal Facilities

Permit Changes

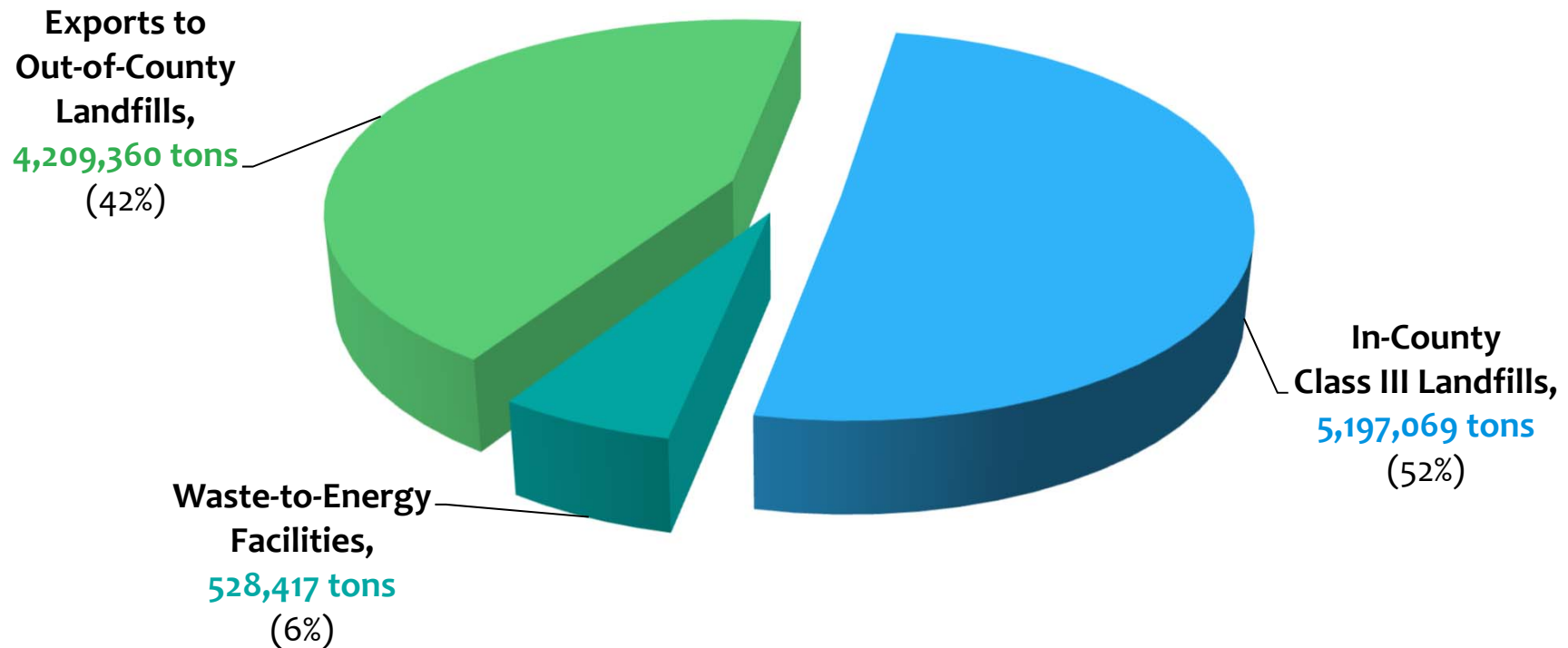
- **Calabasas Landfill –**
SWFP reissued in 2016

Proposed Expansions

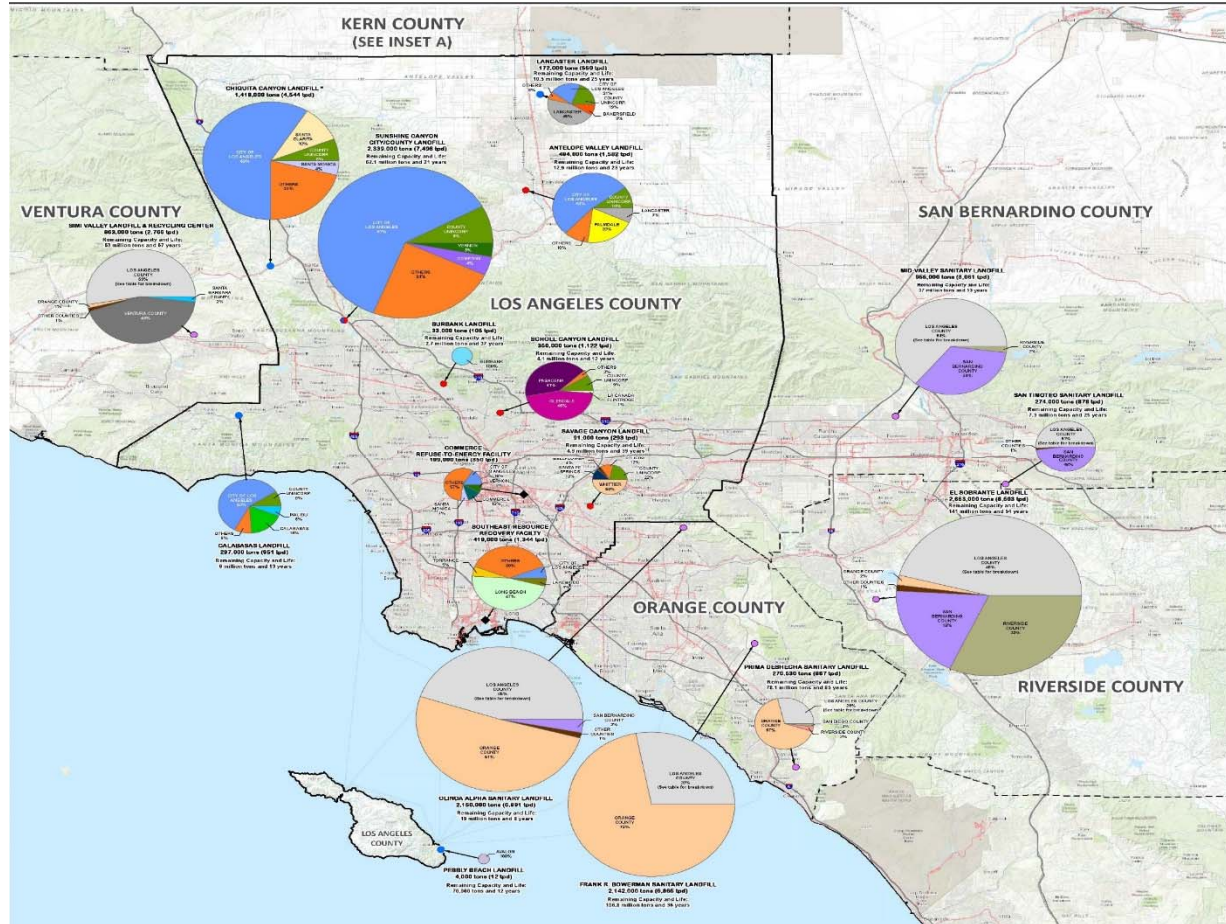
- **Chiquita Canyon Landfill**
 - Average Daily Capacity of 10,000 tpd
 - “Clean Hands Waiver”
- **Scholl Canyon Landfill**
 - 5.5 million tons (Var. 1) or 8 million tons (Var. 2)

2016 Solid Waste Disposal Quantities in Los Angeles County

Total Annual Disposal: **9,934,846 tons**

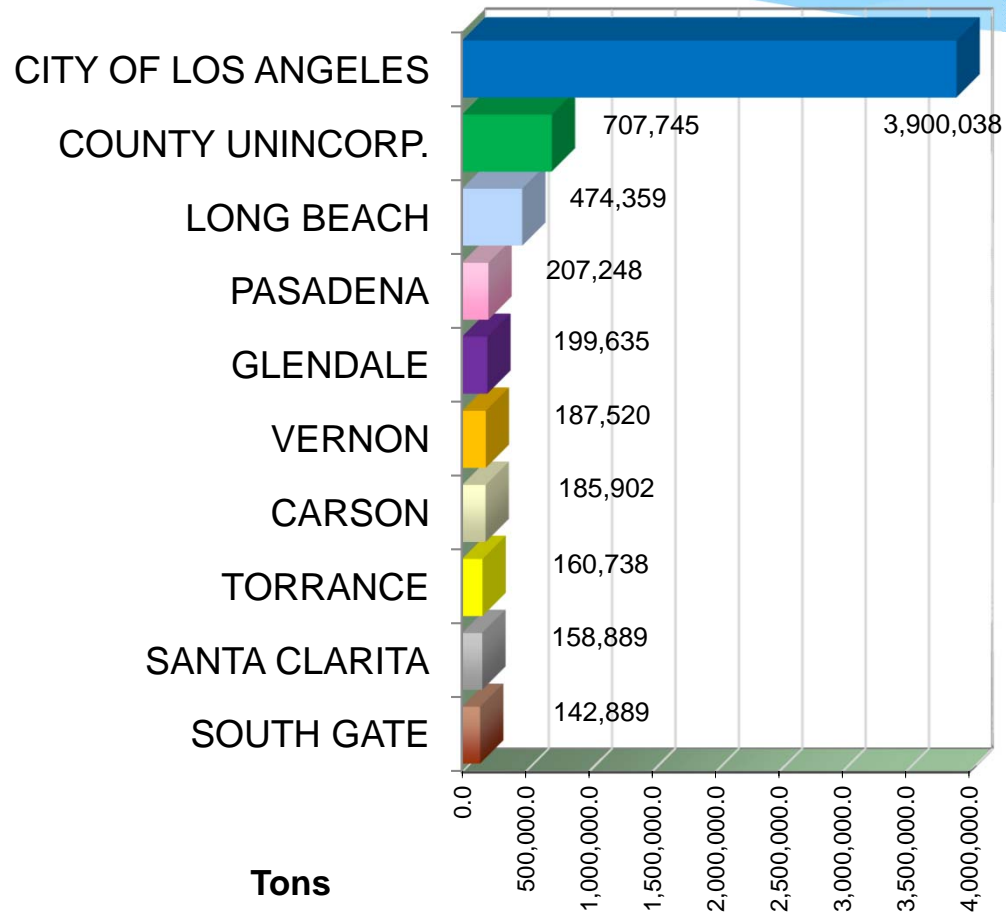


Regional Map of Solid Waste Disposal by Jurisdiction of Origin



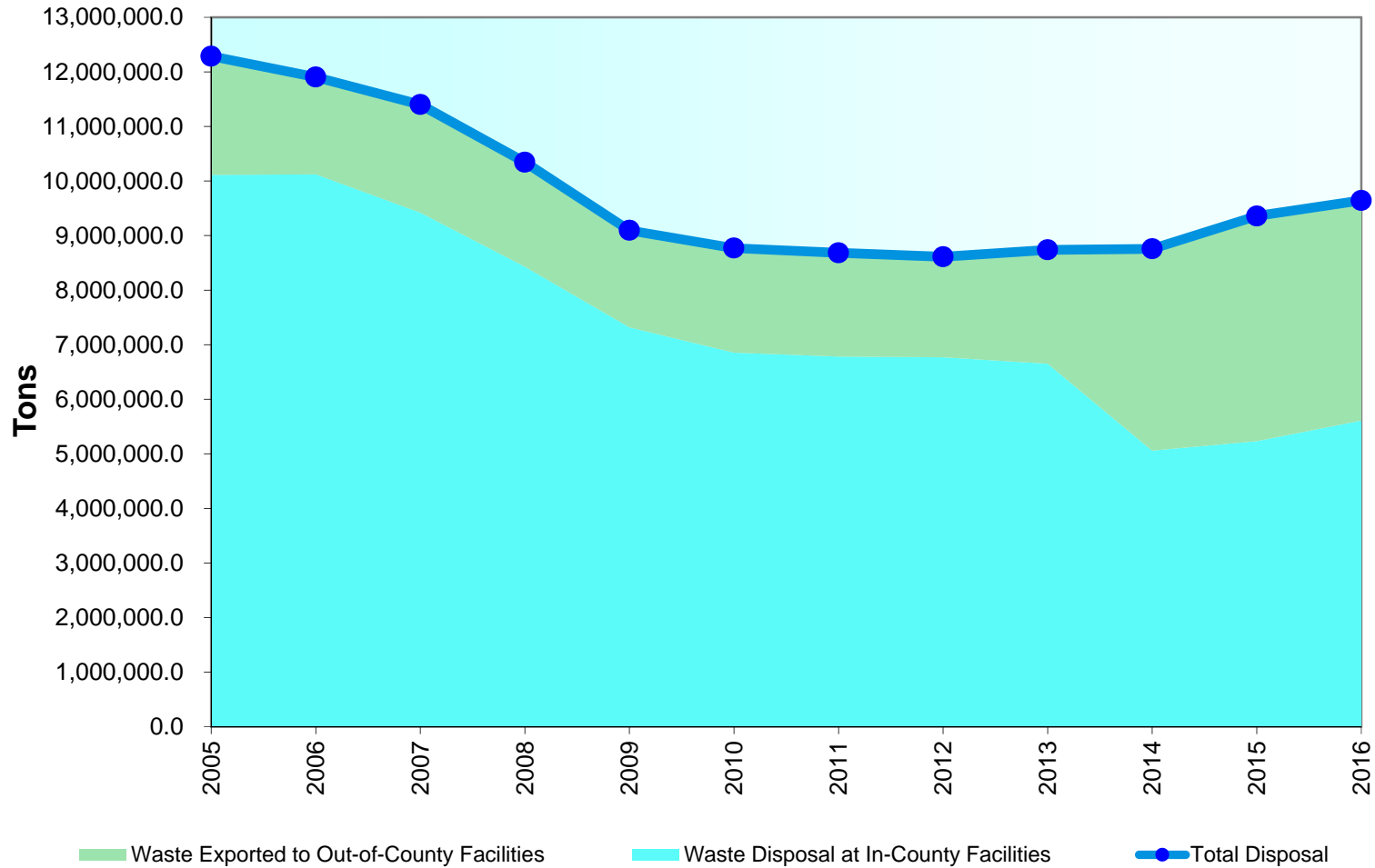
County of Los Angeles CoIWMP, 2016 Annual Report
Public Works, Environmental Programs Division

Top 10 Jurisdiction Disposal Quantities



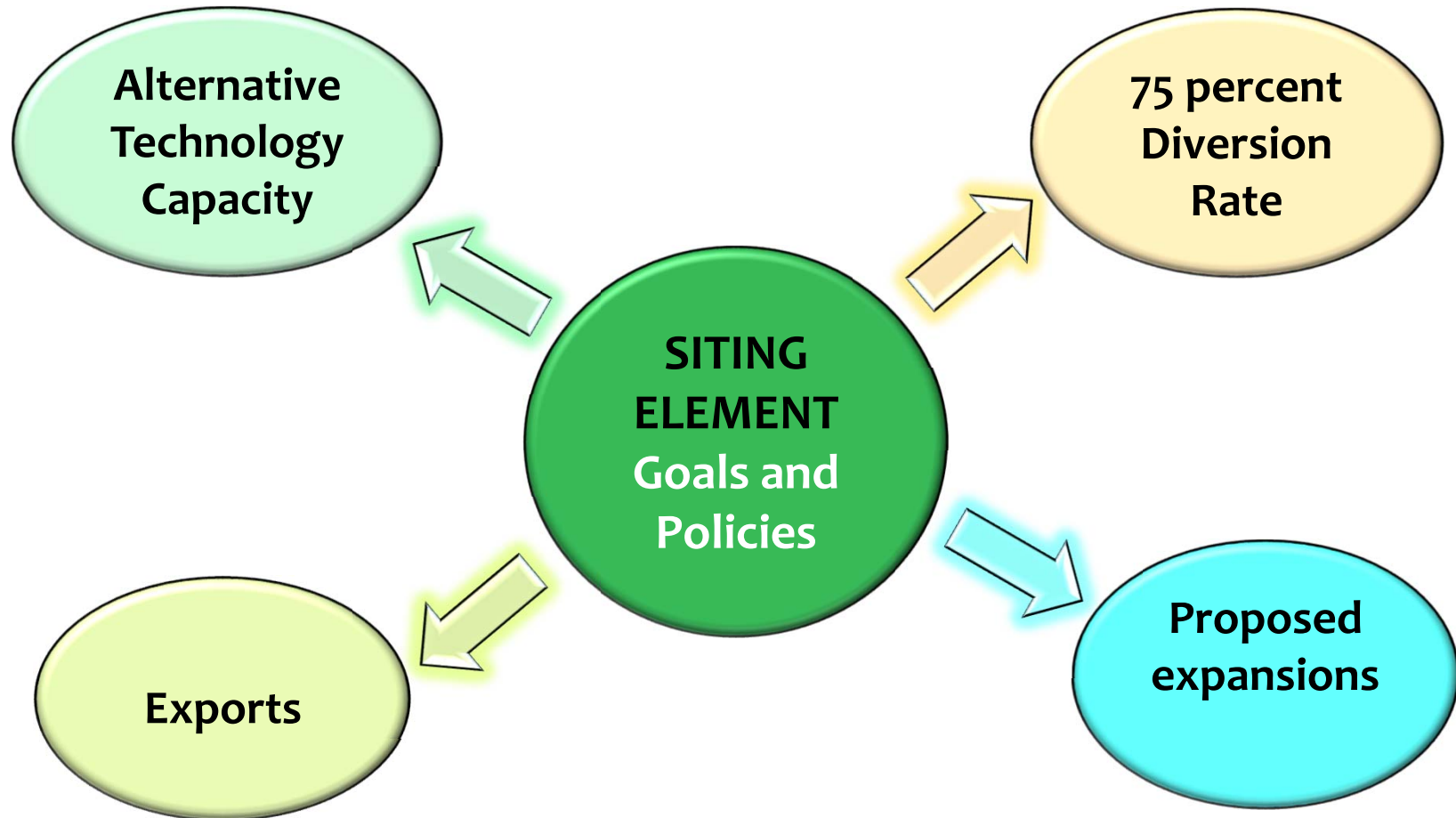
County of Los Angeles ColWMP, 2016 Annual Report
Public Works, Environmental Programs Division

Solid Waste Disposal Trends



County of Los Angeles CoIWMP, 2016 Annual Report
Public Works, Environmental Programs Division

Strategies for Maintaining Adequate Disposal Capacity



Disposal Capacity Need Analysis

Scenarios

Scenario No.	Existing Permitted In-County Disposal Capacity	Diversion Rate of 75 percent by 2020 ¹	Exports to Out-of-County Landfills	Proposed Expansions of In-County Landfills	Utilization of Alternative Technology Capacity	Increase in Exports to Out-of-County Landfills
I Utilization of Permitted In-County Disposal Capacity Only	✓	✓				
II Status Quo	✓	✓	✓			
III Status Quo – Meeting CalRecycle’s Statewide Disposal Target of 2.7 PPD	✓	✓	✓			

¹ Scenario III assumes an increase in diversion rate up to 82% by 2020 in order to meet CalRecycle’s Statewide Disposal Target of 2.7 PPD.

Disposal Capacity Need Analysis

Scenarios (Continued)

Scenario No.	Existing Permitted In-County Disposal Capacity	Diversion Rate of 75 percent by 2020	Exports to Out-of-County Landfills	Proposed Expansions of In-County Landfills	Utilization of Alternative Technology Capacity	Increase in Exports to Out-of-County Landfills
IV Proposed In-County Landfill Expansions	✓	✓	✓	✓		
V Utilization of Alternative Technology Capacity	✓	✓	✓		✓	
VI Increase Exports to Out-of-County Landfills	✓	✓	✓			✓
VII All Options Considered Become Available	✓	✓	✓	✓	✓	✓

County of Los Angeles CoIWMP, 2016 Annual Report
Public Works, Environmental Programs Division

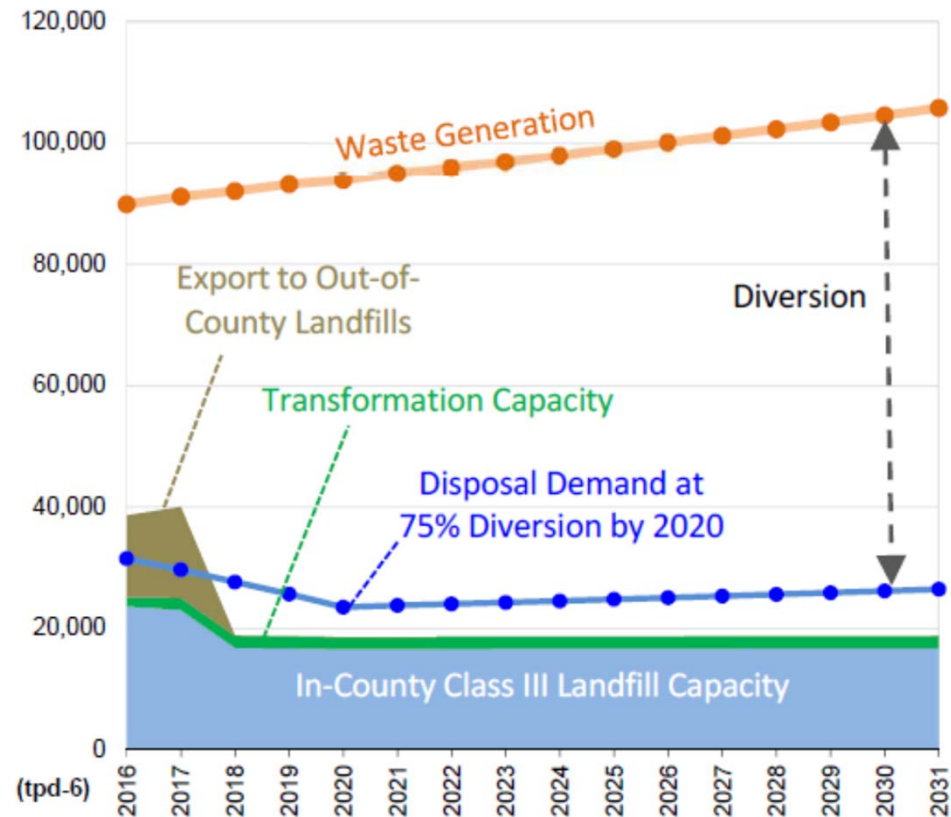
Scenario I

Existing Permitted In-County Capacity Only

Assumptions:

- 75 percent diversion rate by 2020
- Existing Permitted In-County disposal capacity only

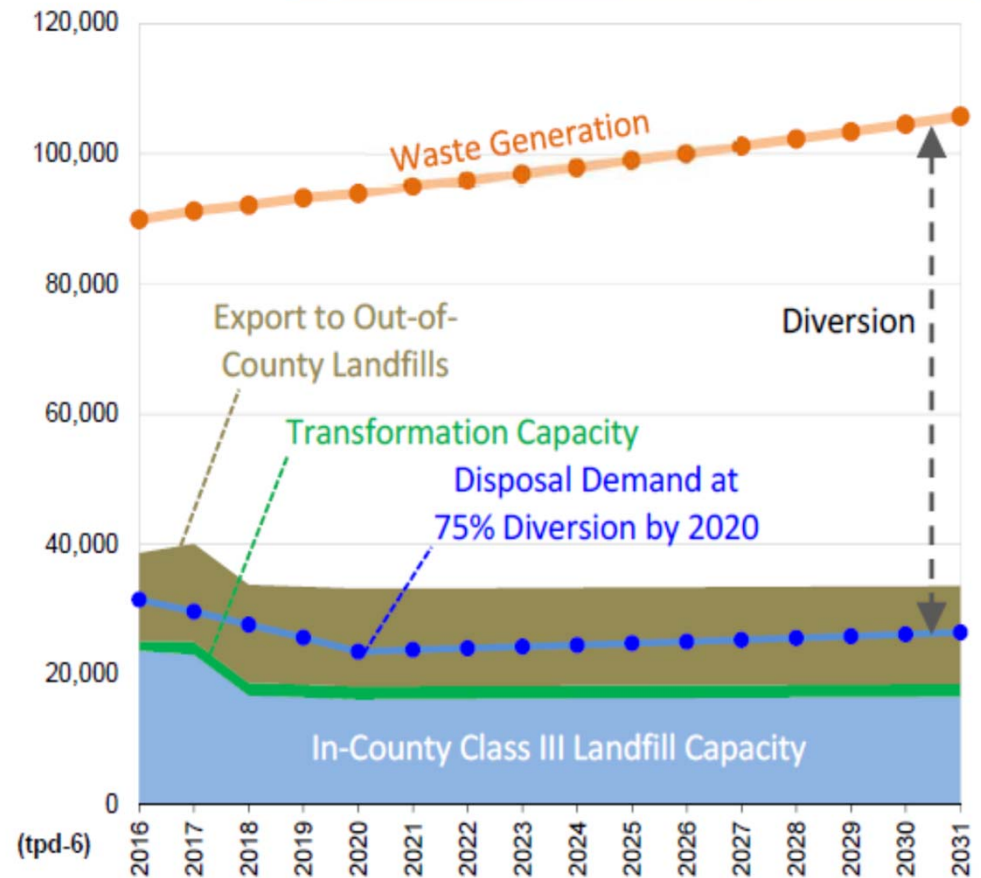
***Reliance on existing Permitted disposal capacity alone would be insufficient in meeting long-term needs.**



Scenario II Status Quo

Assumptions:

- 75 percent diversion rate by 2020
- No increases in out-of-County exports
- No conversion technology facilities (only transformation) or equivalent alternative technology capacity

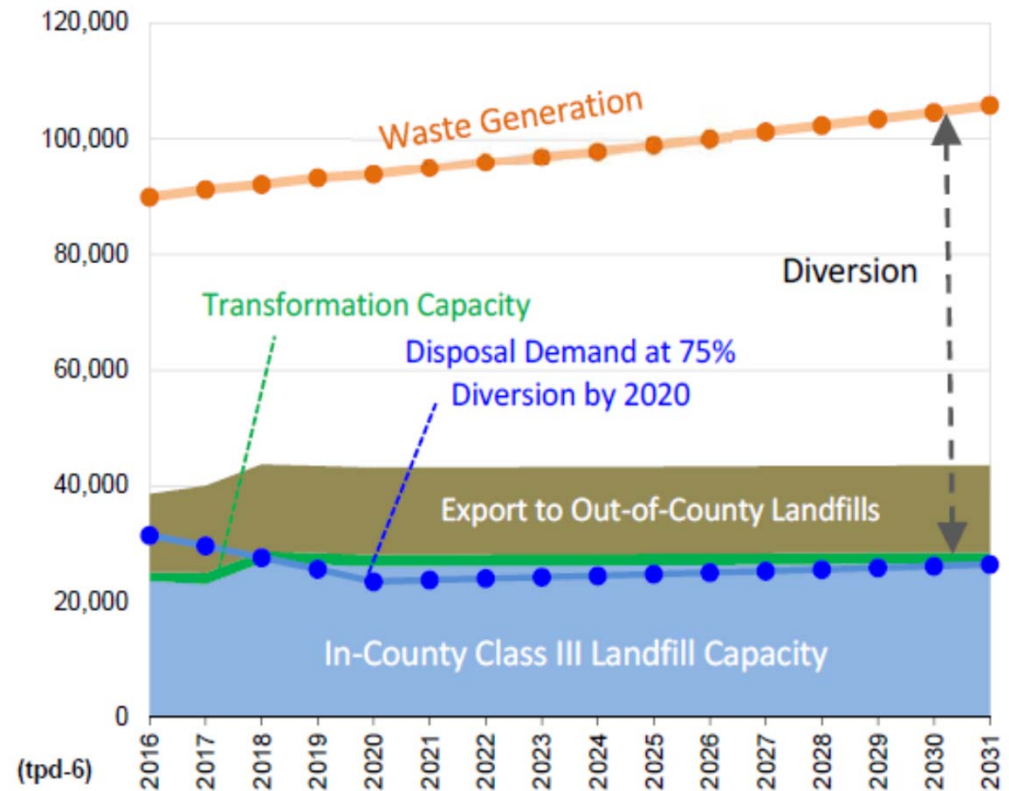


Scenario IV

Proposed In-County Class III Landfill Expansions

Assumptions:

- 75 percent diversion rate by 2020
- In-County landfill expansions



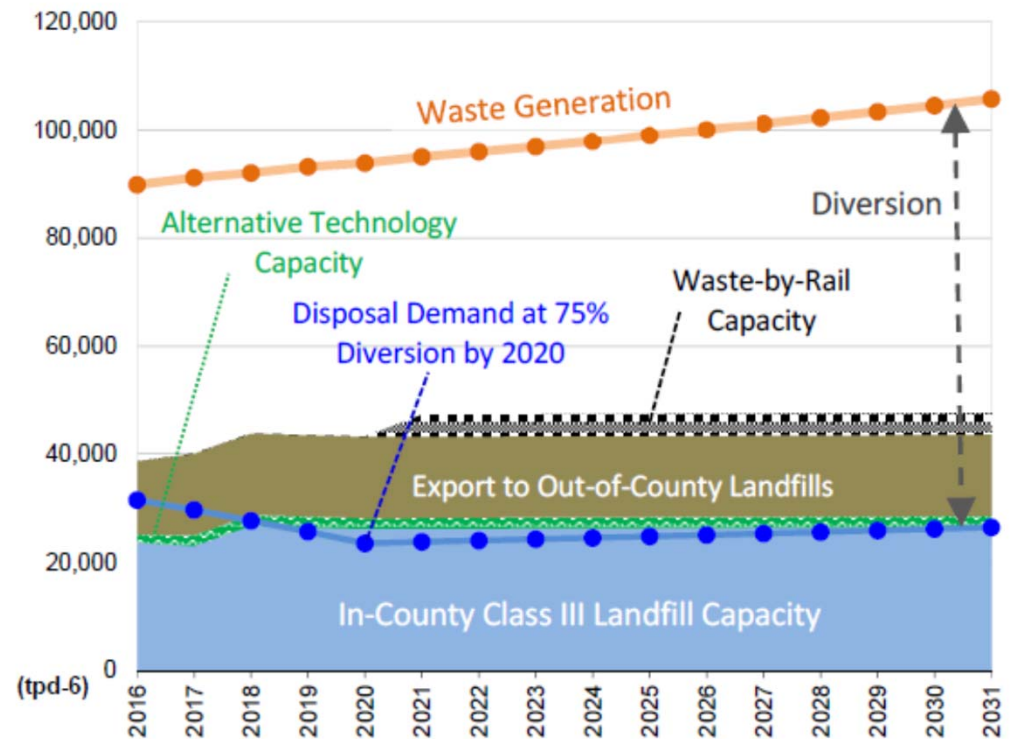
Scenario VII

All Solid Waste Management Options Considered Become Available

Assumptions:

- 75 percent diversion rate by 2020
- In-County landfill expansions
- Alternative technology capacity
- Increase in out-of-County capacity (including waste-by-rail)

***Disposal capacity would be adequate through a multi-faceted approach**



Countywide Siting Element Revision Update

- Change base year from 2015 to 2016
- 15-year planning period:
2016-2031



Thank you.



Questions?