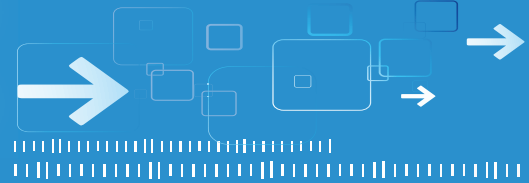




INSIDE SOLIDWASTE



Inside Solid Waste produced quarterly by The Los Angeles County Solid Waste Management Committee/Integrated Waste Management Task Force



TOP STORIES

- 3 Every Drop Counts
- 5 CalRecycle Plan Extension
- 6 Holidays Recycling Campaign
- 9 Rail Project Nears Completion



CalRecycle Prepares AB 341 Report to the Legislature

Task Force urges jurisdictions to voice concerns

The Task Force remains concerned with Calrecycle's proposed recommendations to achieve California's 75 percent diversion goal by the year 2020. The proposed Draft Report and its recommendations could have a major impact on local governments and their ability to remain in compliance with the waste reduction mandates of AB 939. Therefore, the Task Force is urging cities and counties to express their positions on CalRecycle's recommendations and to remain actively engaged in the stakeholder process.

The State's New 75 Percent Goal

AB 341 established a State goal to source-reduce, recycle or compost not less than 75% of solid waste generated in the State, and requires CalRecycle to prepare a report to the Legislature outlining strategies to achieve the 75% goal.

Story continues on page 3

Pumped Up Over Pollution Prevention

Local gas stations have pledged their support for clean waterways and oceans through good housekeeping.

Over 300 gas stations owned by ARCO and United Oil Company have partnered with LA County Public Works Department to share Best Management Practices (BMP) at their stations. The BMP's include housekeeping tips to clean and maintain gas stations to prevent pollution from entering local waterways. The partnership is part of the annual business outreach under the National Pollutant Discharge Elimination System permit. For more information on the Stormwater Program, contact Kimberly Lyman, Public Relation Group, at (626) 458-5975 or klyman@dpw.lacounty.gov.



Hernan Ulloa, United Oil gas station manager, receives a Good Gas Station Operating Practices break-room poster from Kimberly Lyman, Program Manager of the Countywide Stormwater Public Education Program.

Weekly Hazardous Waste Roundups Accept Most Consumer Electronics with a Circuit Board

Household Hazardous Waste/ Electronic Waste Roundups are conducted on Saturdays from 9 a.m. to 3 p.m., rain or shine, unless otherwise noted. For more information, call 1 (888) CLEAN-LA (253-2652), or visit www.CleanLA.com.

Household Hazardous Waste Permanent Collection Centers

City of Los Angeles Permanent Collection Centers are open on Saturday and Sunday from 9 a.m. - 3 p.m., unless otherwise noted. For information, call 1 (800) 98-TOXIC (988-6942). Services suspended during rainy weather.

Gaffey Street Collection Center

1400 N. Gaffey Street San Pedro, CA 90731

Hyperion Treatment Plant

7660 W. Imperial Highway, Gate B Playa Del Rey, CA 90293

Washington Boulevard Collection Center

2649 E. Washington Boulevard Los Angeles, CA 90021

Randall Street S.A.F.E. Center

11025 Randall Street Sun Valley, CA 91352

UCLA Location (E-waste accepted on Saturdays only)

550 Charles E. Young Drive West Los Angeles, CA 90095
Open Thursday, Friday, and Saturday 8 a.m. - 2 p.m.

Los Angeles/Glendale Collection Center

4600 Colorado Boulevard Los Angeles, CA 90039

Antelope Valley Environmental Collection Center

Antelope Valley Public Landfill
1200 West City Ranch Road Palmdale, CA 93551

Note: Open 1st and 3rd Saturday each month 9 a.m. - 3 p.m., rain or shine. Common items accepted include household cleaners, paint, unused medications, sharps waste, household batteries, TV's, computers, stereos, and printers For more information, call County Public Works at 1 (888) CLEAN-LA (253-265



SWMC

Inside Solid Waste

Task Force Public Education & Information Subcommittee

CHAIR

Mike Mohajer

STAFF WRITERS

LA County Public Works
Environmental Programs Division

PRODUCTION COORDINATOR

Dena Venegas

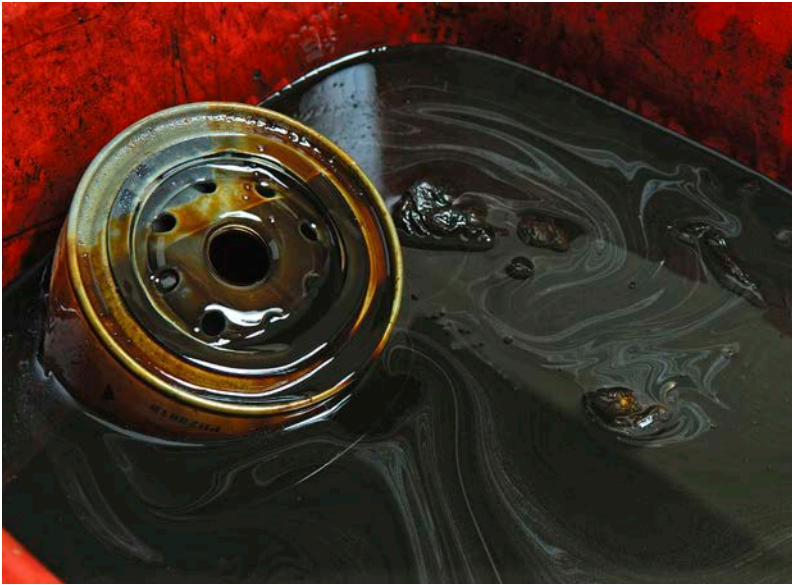
GRAPHIC DESIGNER

Gazar Hedman

For information, call

Tranette Sanders at (626) 458-3562,
Monday -Thursday, 7 a.m. - 5:30 p.m.

Visit www.lacountyiswmtf.org to find agendas, meeting minutes, and copies of the Inside Solid Waste newsletter. JOIN THE TEAM: If you are interested in participating on the Los Angeles County Solid Waste Management Public Education & Information Subcommittee or if you would like to submit an article for Inside Solid Waste, please contact Dena Venegas at (626) 458-3543, dvenegas@dpw.lacounty.gov, or Natalie Jimenez at (626) 458-3530, njimenez@dpw.lacounty.gov. Quarterly meetings are held at the County Public Works Headquarters to discuss and review upcoming newsletters. If you want to be involved or contribute, please join the Subcommittee!



Every Drop Counts

The LA County Public Works Department is continuing to promote free used motor oil and used oil filter collection events.

Public Works collected over 2,100 gallons of used motor oil and 775 used oil filters from more than 800 residents during the 2011-12 Fiscal Year. In exchange for recycling, residents received a free oil and filter container, oil funnel, and shop towel. An additional 36,250 used oil filters were collected at O'Reilly stores through a Public Works partnership. O'Reilly joined forces with Public Works about eight years ago to promote used oil filter recycling, and to make the disposal of used oil filters easy for residents.



A resident brings his used motor oil to a recent Public Works collection event in the City of Artesia.

The used motor oil and oil filter program is funded through a grant by the State of California Department of Resources Recycling and Recovery. Used motor oil and oil filters can also be recycled at Certified Collection Centers (CCCs). To find the nearest collection center, or for a list of upcoming collection events, please visit www.CleanLA.com.

For more information, please contact Edna Gandarilla, program manager, at (626) 458-6536.

continued from page 1

During the late spring and fall of last year, CalRecycle formally presented the Draft Report and the program concepts to achieve the 75% goal in workshops held in Sacramento and Los Angeles County, and asked for stakeholder input. CalRecycle's recommendations will be presented as a part of the Report to the Legislature in January 2014.

Task Force Concerns

The Task Force is extremely concerned about the economic impacts of CalRecycle's proposals on local governments, and particularly those in Southern California. The proposed "concepts" include the elimination of cities' and counties' diversion credit for waste materials used for transformation, alternative daily cover (including green waste), beneficial use at landfills, and waste-derived fuel, together with other proposals that dramatically change the way jurisdictions' compliance with AB 939 is measured. These changes would place many cities out of compliance with the waste reduction mandates of AB 939, forcing them to spend millions of dollars in new programs to make up the difference.

CalRecycle is also proposing to establish standards for MRFs and mixed waste processing facilities which would increase operating costs in order to separate additional "recyclable" materials for which there may not be any local markets. In addition, the Task Force believes that CalRecycle's push for establishing a performance standard for residuals that may be used for energy recovery or other beneficial uses is contrary to CalRecycle's mission, in that placing additional requirements for the processing of materials prior to beneficial use only serves to make such options more difficult and costly. This creates an incentive to send residual wastes to landfills for disposal.

The Task Force encourages CalRecycle to establish policies that would strongly encourage residual wastes to be sent to beneficial uses rather than disposal, such as conversion technologies which can convert residual solid waste into marketable products, green fuels and renewable energy while complementing the State's recycling infrastructure. Howard Levenson, Deputy Director at CalRecycle, has noted that the above workshops have been informal in nature and whether these workshops lead to a formal rulemaking process remains to be seen. Mr. Levenson has also indicated that official responses and feedback regarding stakeholder comments will come in due time. Additional workshops have not been scheduled as of yet.

The Task Force strongly encourages cities and counties to participate in the stakeholder process to ensure the recommendations in CalRecycle's report to the Legislature support, rather than undermine local waste reduction efforts.

For more information please contact Mike Mohajer at (909) 592-1147 or MikeMohajer@yahoo.com.



Statewide Composting Regulations Still Trucking On

CalRecycle continues to conduct informal workshops to develop revisions to Title 14 and 27 regulations regarding compostable materials and transfer/processing guidelines.

The first workshop, held on October 3, 2012 in Baldwin Park, discussed 14 issues proposed by CalRecycle. A survey was also conducted to identify issues that needed more discussion and those ready for the final draft. Subsequently, three workshops were held in Sacramento on October 23, October 31 and November 15, 2012. The October workshops discussed in-vessel digestion, Publicly Owned Treatment Works accepting fats, oils, and greases, and odor management. The November workshop focused on food waste, land application, and green waste contamination.

On October 9, 2012, the Los Angeles County Integrated Waste Management Task Force (Task Force) sent a letter to CalRecycle with recommendations to clearly define the terms “organics”, “compostable organics”, “inorganics” and “non-compostable inorganics”, used by CalRecycle throughout the regulatory revisions to Title 14 and 27.

The Task Force also sent a letter on November 21, 2012, which reiterated previous comments from a series of letters that were sent to CalRecycle, and added new comments on the odor management proposal. This was the first opportunity that the Task Force had to comment on the issue of odor management. This proposal was drafted for the purpose of providing operators and local enforcement agencies with

an objective mechanism to address chronic odor complaints and identify sources of odor. The Task Force recommended that each composting facility should have a well-designed and operated odor impact mitigating plan in place at all times. Comments also included recommending that CalRecycle conduct a pilot program to verify the adequacy of the proposal for a period of 12 months before promulgation of the regulation.

Lastly, the Task Force recommended CalRecycle consult with the Air Quality Management Districts and Air Pollution Control Districts to ensure their input is incorporated into the draft proposal prior to the finalization of the draft regulation

The State Water Resources Control Board cancelled its last two public workshops for the statewide tentative General Waste Discharge Requirements for the Discharge of Wastes at Compost Management Units. The order addresses water quality protection issues for existing and new compost management units, such as general discharging and design specifications as well as the enrollment process. The Order will be considered for adoption and become part of Titles 23 and 27 of the California Code of Regulations.

For more information, please contact Mike Mohajer of the Task Force at (909) 592-1147 or MikeMohajer@yahoo.com, or Wu Tan of the Los Angeles County Department of Public Works at wtan@dpw.lacounty.gov, or visit http://www.waterboards.ca.gov/water_issues/programs/compost/ and <http://www.calrecycle.ca.gov/Laws/Rulemaking/Compost/default.htm>



Steve Howe of Generation Earth teaches a group of children from the Sheriff's Compton Station Youth Activities League the four Rs of recycling.



collected through the recycling program will be used to support student field trips and special events. In addition to recycling, the students' future goals include planting native plants, fruit trees, and a vegetable garden. The vegetables grown on site will be used to teach students how to cook healthy meals. The Compton Youth Activity League is an after school program operated by the LA County Sheriff Department. The free program offers computer labs, homework support and recreational games for children ages 8 through 17.

To learn more about the Generation Earth program, visit www.generationearth.com or contact Edna Gandarilla at (626) 458-6536.

COMPTON YOUTH LEARN TO RECYCLE

Participants in the LA County Sheriff Department's Compton Youth Activity League recently got a lesson in recycling.

LA County Public Works Department's environmental education program Generation Earth showed students the importance of reducing waste and recycling to preserve the environment during a presentation of the four Rs – Rethink, Reuse, Reduce, Recycle. With this new insight, the students plan to setup recycling bins at the Compton League facility to collect plastic bottles and aluminum cans. Funds



CalRecycle Considers CARE Plan Extension Request

CalRecycle is currently considering Carpet America Recovery Effort's extension request on its Carpet Stewardship Plan.

Carpet America Recovery Effort (CARE) is a nonprofit organization charged with carrying out the requirements of Assembly Bill 2398 (Perez, 2010) on behalf of the industry.

The program, started in 2011, follows producer responsibility principles to ensure that, over time, discarded carpets become a resource for new products in a manner that is sustainably funded and provides jobs for Californians. The initial Plan was conditionally approved in January 2012, with December 31, 2012 as the due date for an updated Plan. The program will continue to operate under this Plan until there is a status change.

The Plan will maintain the assessment fee of five cents per square yard for the duration of the program, unless it is changed through a Plan update and approved by CalRecycle. Carpet manufacturers are required by AB 2398 to add this fee to the purchase price of all carpet sold in California. The Task Force is a strong supporter of EPR and actively participated in the legislative process to ensure the enactment of AB 2398. EPR alleviates the significant burden from local governments for the management of postconsumer products by requiring manufacturers, distributors, and retailers to share in that responsibility.

For additional information, please contact Mike Mohajer of the Task Force at (909) 592-1147 or MikeMohajer@yahoo.com. For up to date information on the proposed plan, please go to www.calrecycle.ca.gov/Carpet/Default.htm.

Recycling Campaign Makes Holidays Brighter for Kids in Need



LA County Public Works Assistant Deputy Director Pat Proano (third from right) was recently joined by (from left) Jennifer Regan, AEG Global Sustainability; Lee Zeidman, STAPLES Center; Chef Mary Sue Milliken of Border Grill; Doug Corcoran, Waste Management of Southern California; Karen Coca, City of Los Angeles Bureau of Sanitation; and Sharon Grove, LADWP, to help kick off America Recycles Day at L.A.

This past holiday season was a little bit merrier and environmentally friendlier thanks to a joint recycling campaign by LA County Public Works Department and the County Library in celebration of the 15th Annual America Recycles Day.

The campaign encouraged residents to bring empty California Redemption Value beverage containers to libraries in Compton, La Crescenta, South Gate, Malibu and Norwalk, as well as other County facilities. Over 400 beverage containers were collected and sold, with the proceeds aiding the annual Toys for Tots program. Participants were also invited to take the County recycling pledge to reduce, reuse, recycle, and rethink. Sponsored by Keep America Beautiful, America Recycles Day is designed to raise environmental awareness and promote recycling Countywide.

To learn more about how you can help preserve the environment by recycling, visit www.CleanLA.com.

Alameda County Leads the Way in Drug Disposal EPR

The Alameda County Board of Supervisors recently passed the nation's first safe drug disposal ordinance setting the precedent for other local governments to take action in protecting their citizens and waterways.



The new Safe Drug Disposal Ordinance requires drug companies to pay for collection and disposal of the leftover drugs they manufacture. The Ordinance, passed in July 2012, is based on an Extended Producer Responsibility or EPR policy framework, adopted by CalRecycle in 2008, which places primary responsibility on minimizing the environmental, health and public safety impact on the product manufacturers. According to Alameda County, about 1.5 million of its residents have as much as 681 tons of unwanted drugs stockpiled in medicine cabinets. Additionally,

poisoning from prescription and illicit drugs is the fastest rising cause of accidental death among older adults in the County. As a result, the effort has attracted wide support from a variety of cities and agencies across the country facing similar issues. The pharmaceutical industry has filed a lawsuit against Alameda County challenging the ordinance.

For more information on the Alameda County Safe Drug Disposal Ordinance, please visit <http://www.acgov.org/aceh/safedisposal/index.htm>.



The FastOx Pathfinder includes a 25-tpd gasifier, an air separation unit, waste pre-processing, gas conditioning, a control skid, and a Fischer-Tropsch isle for the production of diesel.



SIERRA ENERGY PRESENTS SACRAMENTO PORT PILOT PROJECT

Sierra Energy presented its innovative efforts in conversion technology including its successful SacPort pilot project to the Task Force's Alternative Technology Advisory Subcommittee on November 15, 2012.

The company, founded in 2004, uses a waste gasification technology known as FastOX. While the volcano-shaped design of the FastOX gasifier is derived from a 200-year-old steel-making blast furnace design, Sierra Energy's application of the design as a gasifier is unique and provides the gasifier the ability to convert nearly any type of carbonaceous waste stream into renewable energy.

According to Mike Hart of Sierra Energy, the technology produces an energy-dense syngas that contains 70% carbon monoxide and 30% hydrogen. If the syngas produced is combusted to create electricity, the technology releases minimal emissions though the conversion process that itself is fully enclosed and produces no emissions.

In fact, the syngas can be used to produce up to 42 gallons of diesel from each ton of converted trash. The technology is also able to recover both glass and metals for recycling/recovery. The process involves waste being fed into the top of the gasifier while oxygen and steam are injected at the bottom. Inorganics melt and are recovered as inert stone and metal, while organics vaporize producing the energy-dense syngas.

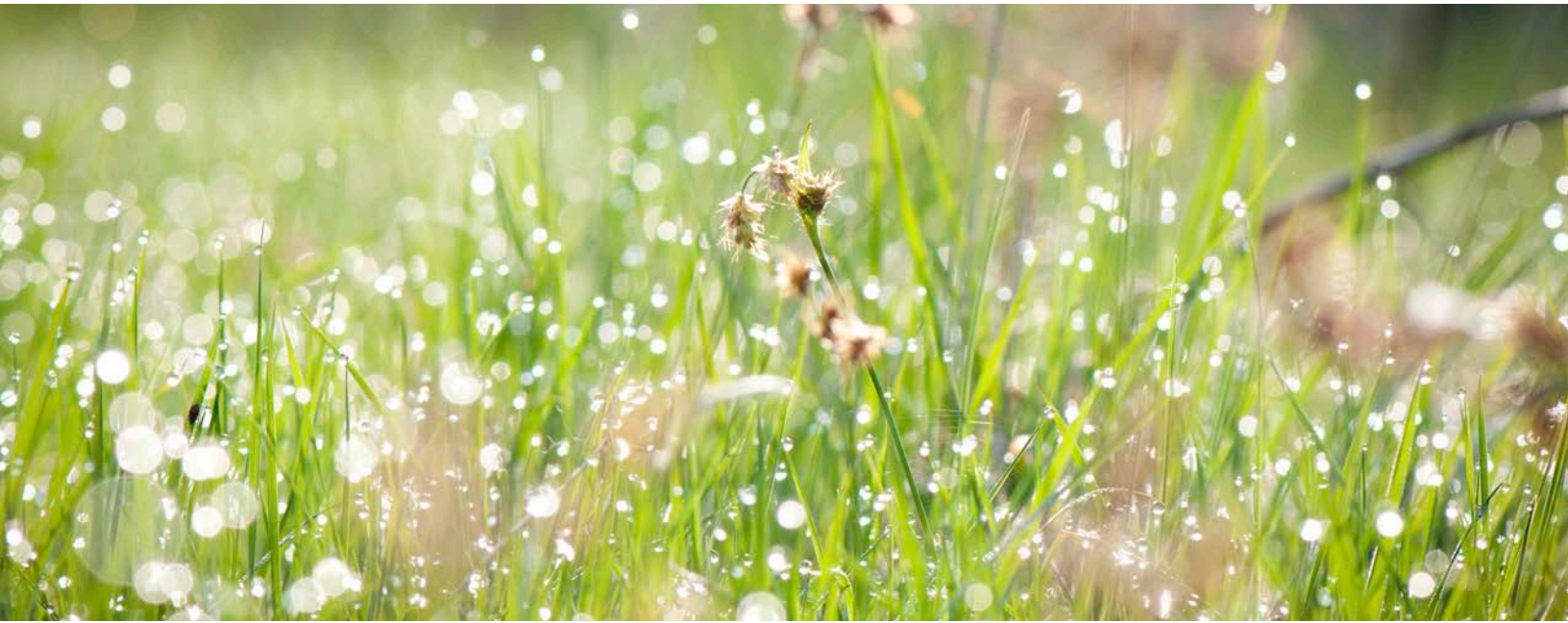
For the last four years, Sierra Energy has been working with the U.S. Department of Defense to test the technology on a variety of feedstocks. The company built

its first demonstration plant on the site of the former McClellan Air Force Base near Sacramento, and which has been testing the viability of the technology since 2009.

In developing its 12 ton-per-day demonstration unit, Sierra Energy recognized the wider availability of project opportunities at the community scale rather than the larger 1,000 ton per day or more projects commonly proposed for waste to energy projects.

One such project which is already under way is SacPort Biofuels in Sacramento, California. SacPort Biofuels would initially divert 50 tons of waste from landfills per day and was funded by a \$5 million investment from the California Energy Commission and strongly supported by the City of West Sacramento. The project will use contaminated green waste, municipal solid waste and medical waste as its feedstock. It has already successfully gone through the Environmental Impact Report process as well as CEQA and is in the final stages before construction sometime in 2013.

For more information regarding this project, please contact Mr. Mike Mohajer at MikeMohajer@yahoo.com or (909) 592-1147.



Public Works Prepares New Siting Element for Board Approval

The Los Angeles County Department of Public Works is preparing to present a revised Countywide Siting Element to the Board of Supervisors.

Due to the County's rapidly diminishing landfill capacities, the existing Siting Element, approved by CalRecycle in 1998, needs to be revised to provide updated solid waste generation and capacity analyses, and to reflect changes in solid waste management laws, regulations, and available technologies,

The California Integrated Waste Management Act of 1989 (AB 939) requires each county to prepare a siting element determining how it plans to manage the disposal of solid waste that remains after recycling, composting, and other waste recovery activities have taken place over a 15-year planning period.

County Public Works, under the auspices of the Los Angeles Solid Waste Management Committee/Integrated Waste Management Task Force (Task Force), and its Facility and Plan Review Subcommittee, prepared the Preliminary Draft of the revised Siting Element, which includes the following significant issues: (1) removal of Elsmere Canyon and Blind Canyon from the list of future potential landfill sites; (2) potential expansions of several in-County Class III landfills; (3) updates to the goals and policies in accordance with the new solid waste management paradigm; (4) potential sites for alternative to landfill technology facilities; and (5) discussion regarding the development

of infrastructure to transport solid waste to out-of-County landfills to complement the County's waste management system.

The revised Siting Element demonstrates that the County will continue to meet its disposal capacity needs throughout the 15-year planning period by implementing a comprehensive solid waste management system consisting of enhanced waste reduction and diversion programs, greater resource recovery efforts through the development of alternatives to landfills such as conversion technologies, successfully permitting and developing proposed in-County landfill expansions, and supporting the development of infrastructure to facilitate exportation of waste to out-of-County landfills such as the Sanitation Districts' Waste-by-Rail System.

On November 15, 2012, the Task Force concurred with the Preliminary Draft of the revised Siting Element. As such, Public Works is moving forward with the preparation of the environmental documents to comply with the California Environmental Quality Act. Upon completion of the documents, the Preliminary Draft will then be considered by the Board of Supervisors for authorization to release to the public for review.

For more information, contact Emiko Thompson of the Los Angeles County Department of Public Works at (626) 458-3521, Monday through Thursday, 7 a.m. to 5:30 p.m. or Mike Mohajer of the Task Force at MikeMohajer@yahoo.com or (909) 592-1147.



The completed System will be capable of transporting solid waste via railroad from the Puente Hills Intermodal Facility (above) in the City of Industry to the Mesquite Regional Landfill in Imperial County.

Waste-by-Rail Project Nears Completion

The County Sanitation Districts of Los Angeles County (Districts) Waste-by-Rail System is expected to be completed by the closure of the Puente Hills Landfill on October 31, 2013.

Upon completion, the railroad system will be capable of transporting solid waste via railroad from the Puente Hills Intermodal Facility (PHIMF) located in the City of Industry, to the Mesquite Regional Landfill in Imperial County.

Construction of the new \$450-million-system began in 2006 and includes two operating material recovery facilities, intermodal facilities on either end and a fully operational remote landfill capable of accepting 600 million tons of trash.

According to 2012 Progress Report (Report) by the Districts work has been completed on the administration and maintenance building at the PHIMF, including underground utilities, and the majority of the railroad improvements, which consisted of retaining walls at the State Route 60 and Crossroad Parkway bridges, pier abutments for the railroad bridge at Peck Road, and concrete panels along the northern Union Pacific Railroad's right-of-way.

Additionally, the Districts acquired property interests from private land owners and entered into an agreement with Southern California Edison for the construction

and maintenance of railroad switch cabinets and retaining walls associated with the PHIMF. The Districts also executed an Industrial Track Agreement identifying the responsibilities between the Districts and Union Pacific Railroad for the construction, ownership, operation, and maintenance of the rail track that will serve the PHIMF.

In a letter to the Districts, the Los Angeles County Solid Waste Management Committee/Integrated Waste Management Task Force (Task Force) acknowledged the enormity and complexity of the project, as well as the efforts the Districts have put forth towards developing the System. Regarding the progress report's conclusion that there is sufficient transfer capacity within the County to direct the green waste to appropriate end uses, as well as sufficient facility capacity within the County and surrounding counties to beneficially reuse all of the green waste that the Landfill receives, the Task Force commented that the Report should be modified to clarify that economics was not considered as a factor in determining the adequacy of the existing green waste management infrastructure.

In their final Report dated November 14, 2012, the Districts acknowledged that the cost for green waste may increase due to several cumulative factors including longer transport distances and replacing the relatively inexpensive Alternative Daily Cover program with other handling and processing services.



New Program Takes Back Old Paint

California residents and businesses can now recycle their leftover paint for free at convenient retail stores with PaintCare's new take-back program.

PaintCare is an industry sponsored paint stewardship company established to manage the reuse, recycling and proper disposal of unused architectural paint in California, as part of State Assembly Bill 1343. Initially launched in October 2012 with a paint retail chain of about 300 stores (60 are located in Los Angeles County), PaintCare's goal is to have approximately 750 take back locations across the state.

The take-back program will be funded through an assessment collected on the purchase of new paint sold in California, and managed by PaintCare. Any surplus funds must be put back into the program to reduce the costs of the program, including the assessment amount, which ranges from 35 cents to \$1.60, depending on the container size. PaintCare will use the fees to pay for the transportation of leftover paint from partnering drop-off sites to processors for recycling and energy recovery.

Assembly Bill 1343, enacted in September 2010, is the first major extended producer responsibility law in California. It requires manufacturers to develop an architectural paint stewardship plan to reduce the costs and environmental impacts of the disposal of postconsumer paint, shifting the responsibility for paint management from local governments to the paint manufacturers.

Prior to adoption of AB 1343, the only way for residents to properly manage their leftover paint was through local, taxpayer or rate-payer-funded household hazardous waste programs. Due to the immense cost to manage such waste, local programs can typically afford to serve only between 5 and 10 percent of the residents in their jurisdictions although paint consistently represents about one-third of the material collected through local household hazardous waste programs.

Los Angeles County currently spends over one million dollars annually to dispose of paint collected through the County's mobile collection events and permanent collection centers. At this time, negotiations continue between PaintCare and the County to establish an agreement for paint to be collected through the County's mobile collection events and permanent collection centers. The County anticipates a reasonable solution soon to potentially reduce its paint disposal costs.

For more information on paint disposal locations and program details, please visit www.PaintCare.org or call (855) 724-6809. For information on LA County's Household Hazardous Waste Management Program and other environmental programs, visit www.CleanLA.com or call toll free 1(888) Clean LA.

For paint drop-off locations in Los Angeles County see next page

Paint drop-off locations in Los Angeles County

Visit Paintcare.org or call (855) 724-6809 for questions

STORE	ADDRESS	CITY	ZIP
Dunn-Edwards	11645 South St	Artesia	90701
Sherwin Williams	11405 Artesia Blvd	Artesia	90701
Shilpark Paint	11521 Artesia Blvd	Artesia	90701
Acrylatex Coatings & Recycling	1000 W Kirkwall Rd	Azusa	91702
Sherwin Williams	6849 Topanga Canyon Blvd	Canoga Park	91303
Sherwin-Williams	21021 Soledad Canyon Rd	Canyon Country	91351
Vista Paint	10717 E South St	Cerritos	90703
Sherwin Williams	10230 Mason Ave	Chatsworth	91311
Sherwin Williams	1165 Wright Way Ste A	City of Industry	91748
Dunn-Edwards	5777 W Washington Blvd	Culver City	90232
Sherwin-Williams	5756 Mesmer Ave	Culver City	90230
Sherwin-Williams	9788 Firestone Blvd	Downey	90241
Sherwin-Williams	17500 S Main St	Gardena	90248
Dunn-Edwards	501 East Broadway	Glendale	91205
Vista Paint	420 E Colorado St	Glendale	91205
Dunn-Edwards	630 S Grand Ave	Glendora	91740
Dunn-Edwards	15300 Hawthorn Blvd	Lawndale	90260
Shilpark Paint	15617 Hawthorne Blvd	Lawndale	90260
Vista Paint	16325 Hawthorne Blvd	Lawndale	90260
Dunn-Edwards	2211 N Bellflower Blvd	Long Beach	90815
Sherwin Williams/ Pro-Line Paint Co	1168 Harbor Ave	Long Beach	90813
Vista Paint	3405 E Artesia Blvd	Long Beach	90805
Dunn-Edwards	7064 W Sunset Blvd Ste A & B	Los Angeles	90028
Dunn-Edwards	2001 S Hoover St	Los Angeles	90007
Dunn-Edwards	11710 Santa Monica Blvd	Los Angeles	90025
Dunn-Edwards	7003 Topanga Canyon Blvd	Los Angeles	91303
Frazee Paint (F53)	805 N Highland	Los Angeles	90038
Sherwin-Williams	1367 Venice Blvd	Los Angeles	90006
Sherwin-Williams	883 N Western Ave	Los Angeles	90029
Vista Paint	4225 W Pico	Los Angeles	90019
Dunn-Edwards	4869 E Slauson Ave	Maywood	90270
Dunn-Edwards	15335 Chatsworth St	Mission Hills	91345
Vista Paint	11034 Sepulveda Blvd	Mission Hills	91345
Sherwin Williams	11305 Magnolia Ave	N Hollywood	91601
Sherwin-Williams	8311 Haskell Ave	North Hills	91343
Dunn-Edwards	12861 Sherman Way	North Hollywood	91605
Dunn-Edwards	9167 Reseda Blvd	Northridge	91325
Dunn-Edwards	12125 Imperial Hwy Unit B	Norwalk	90650
Dunn-Edwards	730 W Rancho Vista Blvd	Palmdale	93551
Sherwin-Williams	550 W Ave P Ste A	Palmdale	93551
Sherwin-Williams	7613 Somerset Blvd	Paramount	90723
Catalina Paint	456 S Rosemead Blvd	Pasadena	91107
Dunn-Edwards	3897 E Colorado Blvd	Pasadena	91107
Sherwin-Williams	3262 E Colorado Blvd	Pasadena	91107
Vista Paint	3341 E Colorado Blvd	Pasadena	91107
Dunn-Edwards	3574 Rosemead Blvd	Rosemead	91770
Vista Paint	173 N Village Ct #100	San Dimas	91773
Vista Paint	20655 Soledad Canyon Rd #1	Santa Clarita	91351
Sherwin Williams	816 Pico Blvd	Santa Monica	90405
Vista Paint	5840 Sepulveda Blvd	Sherman Oaks	91411
Sherwin-Williams	1000 E Willow St	Signal Hill	90755
Dunn-Edwards	25520 The Old Rd	Stevenson Ranch	91381
Dunn-Edwards	4127 Pacific Coast Hwy Ste C	Torrance	90505
Sherwin-Williams	1731 Crenshaw Blvd	Torrance	90501
Dunn-Edwards	6315 Sepulveda Blvd	Van Nuys	91411
Frazee Paint (F43)	15725 Saticoy St	Van Nuys	91406
Glidden Professional Paint Ctr	7554 Van Nuys Blvd	Van Nuys	91405
Shilpark Paint	6254 Sepulveda Blvd	Van Nuys	91411
Dunn-Edwards	2824 E Garvey Ave S	West Covina	91791
Sherwin-Williams	1705 W Garvey Ave N Ste B	West Covina	91790
Vista Paint	235 N Azusa Ave	West Covina	91791
Dunn-Edwards	14870 Whittier Blvd	Whittier	90605
Vista Paint	22504 Ventura Blvd	Woodland Hills	91367