

# Devil's Gate Reservoir Restoration Project Southeast Entrance Improvement

**Fourth Public Outreach Meeting**  
**August 18, 2022 – 6 PM to 7 PM**

# Agenda

- Summary of previous meetings
- Design Concept
- Open Discussion
- Next steps



# Taking a Community-First Approach

## Previous Meetings

- Hahamongna Accountability Project, Pasadena Audubon Society, Arroyo Seco Foundation • 12/22/20
- Hahamongna Watershed Park Advisory Committee • 9/28/21; 11/16/21; 1/25/21; 3/22/21; 5/24/21
- Community Presentation • 9/27/21; 11/15/21; 1/31/22
- Pasadena Parks, PW, DOT • 2/3/22; 5/31/22; 6/16/22
- HAP/ASF/Pasadena Parks, PW, DOT, Council • 3/10/22
- Mayor of Pasadena & Supervisor Barger • 3/30/22
- Pasadena Parks, PW Biologists, Operations Crew • 6/7/22
- Pasadena City Council & PW • 7/20/22



# Taking a Community-First Approach

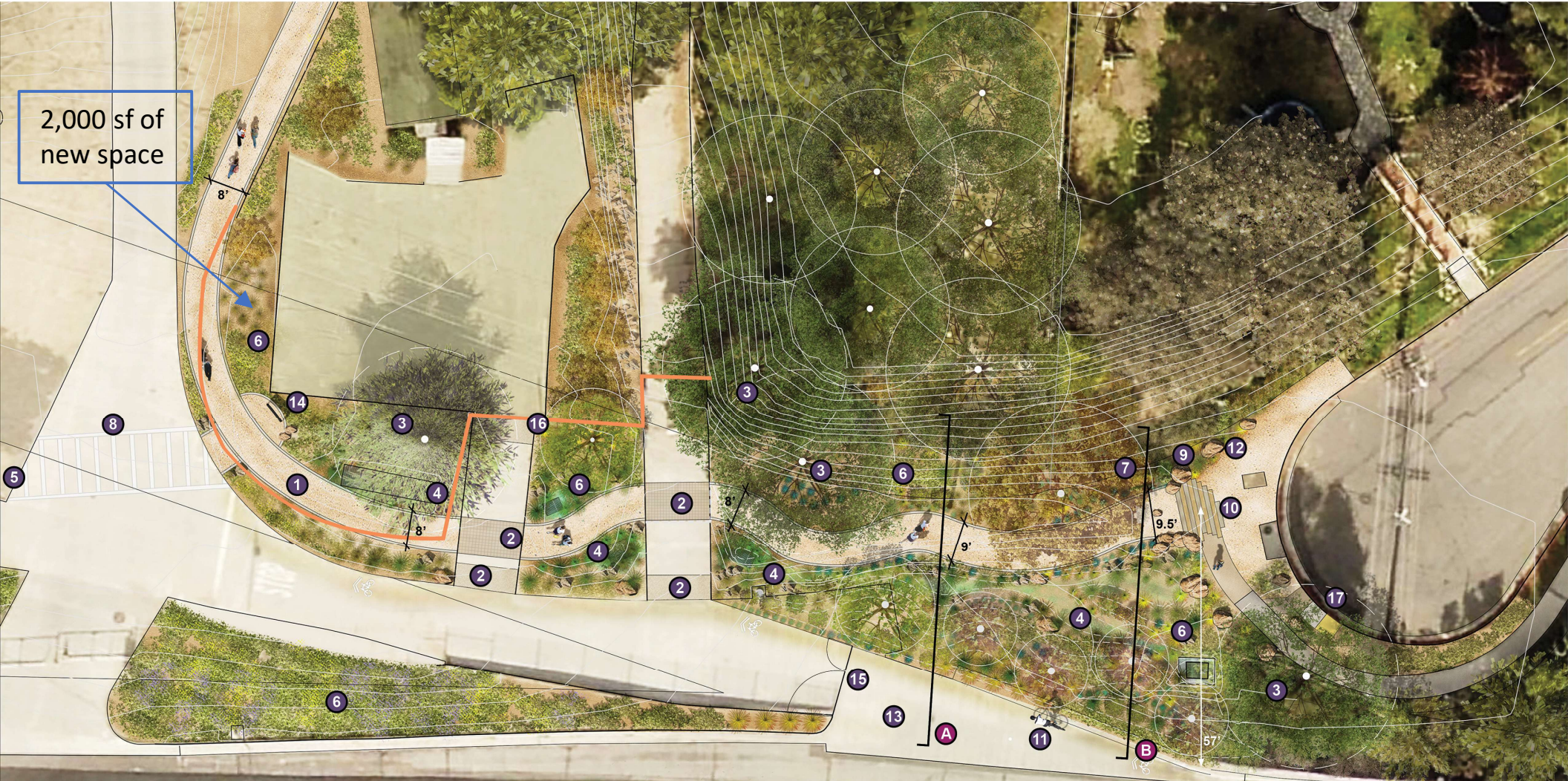
## Summary of Comments Incorporated from Previous Meetings

- Incorporate natural materials
- No benches & discourage loitering
- Add Oak trees
- Refurbish old building & chain link fence, naturalize the entrance
- Add ADA ramp
- Incorporate the entrance with the other trails
- Use natural materials for a barrier rather than chain link fence
- Work with City of Pasadena to enhance bike/pedestrian/vehicle safety on Oak Grove
- Lower the grade of the entrance & walkway
- Enhanced signage
- Widen DG Walkway
- Reduce concrete



# Taking a Community-First Approach

## DEVIL'S GATE DAM ENTRANCE - CONCEPT PLAN



- 1 Decomposed Granite Path
- 3 Existing Tree. Protect in place
- 5 Updated Entrance Sign
- 7 Wayfinding / Interpretive Signage
- 9 Boulder as Bollard
- 11 Shared Bike Route
- 13 Slip Road for Maintenance
- 15 New Gate
- 17 ADA Accessible Curb Ramp
- 2 Colored Concrete Crossing
- 4 Bio-Swale
- 6 Drought-tolerant and Native Plants
- 8 Striped Crossing
- 10 Colored Concrete
- 12 Decomposed Granite
- 14 Community Kiosk
- 16 Existing fence

SCALE: 1" = 20'-0" N



# Taking a Community-First Approach



Proposed improvements have ~2000 sq ft less than pre-project configuration



# Taking a Community-First Approach

## 2018 View from Cul-de-sac





# Taking a Community-First Approach

## Proposed View from Cul-de-sac



- New ADA Ramp
- Lowered elevation of Decomposed Granite Path
- Earthen Berm with trees as a barrier
- Bioswale for runoff, native plantings
- Park welcome sign





# Taking a Community-First Approach

## 2018 View Looking at Cul-de-sac





# Taking a Community-First Approach

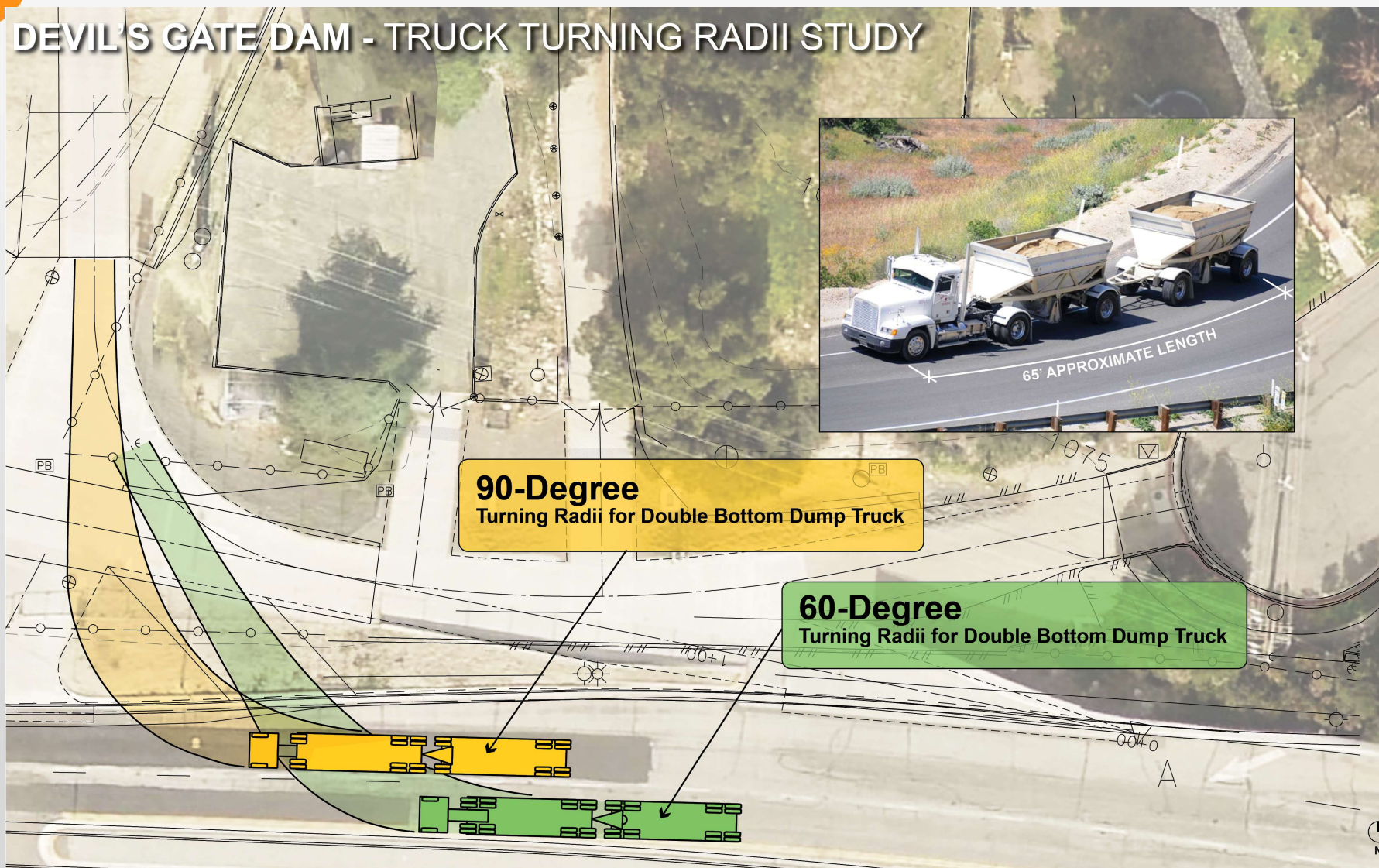
## Proposed View Looking at Cul-de-sac



- Shared bike path along slip lane
- Widened pathway ~ 9'
- 5 new trees, and earthen berm as a roadway barrier



# Taking a Community-First Approach



- Alternative slip lane designs pose traffic safety hazards as trucks would slow or stop in an active roadway



# Taking a Community-First Approach

## Looking Towards the Dam along path



- New oak trees above the walkway
- Improved fencing along Oak Grove
- Berm & plantings to create path separation from the roadway



# Taking a Community-First Approach

## Looking Northwest along path



- Refurbished operations buildings
- Community kiosk at trails intersection
- Improved fence & shrubs to create visual barrier of buildings
- Improved trail walkways and park signage

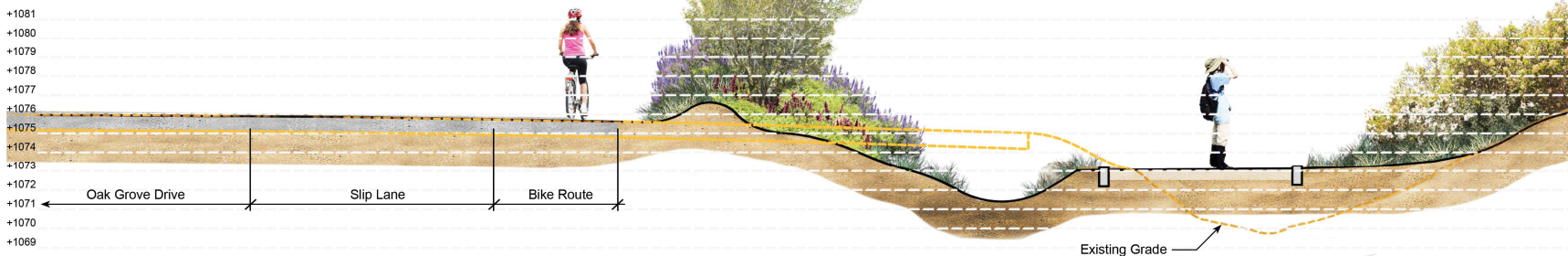


# Taking a Community-First Approach

## Cross Section

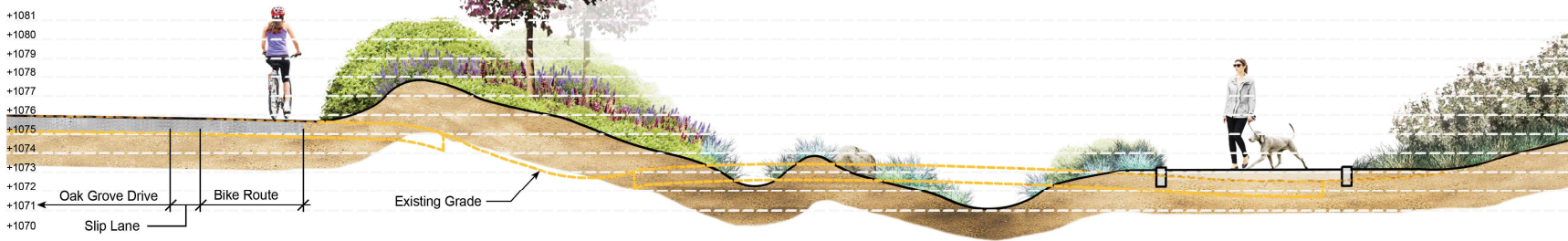
### SECTION A

KEY MAP



### SECTION B

KEY MAP



- Proposed walkway will be lowered and native plants will create a visual barrier of the roadway



# Taking a Community-First Approach

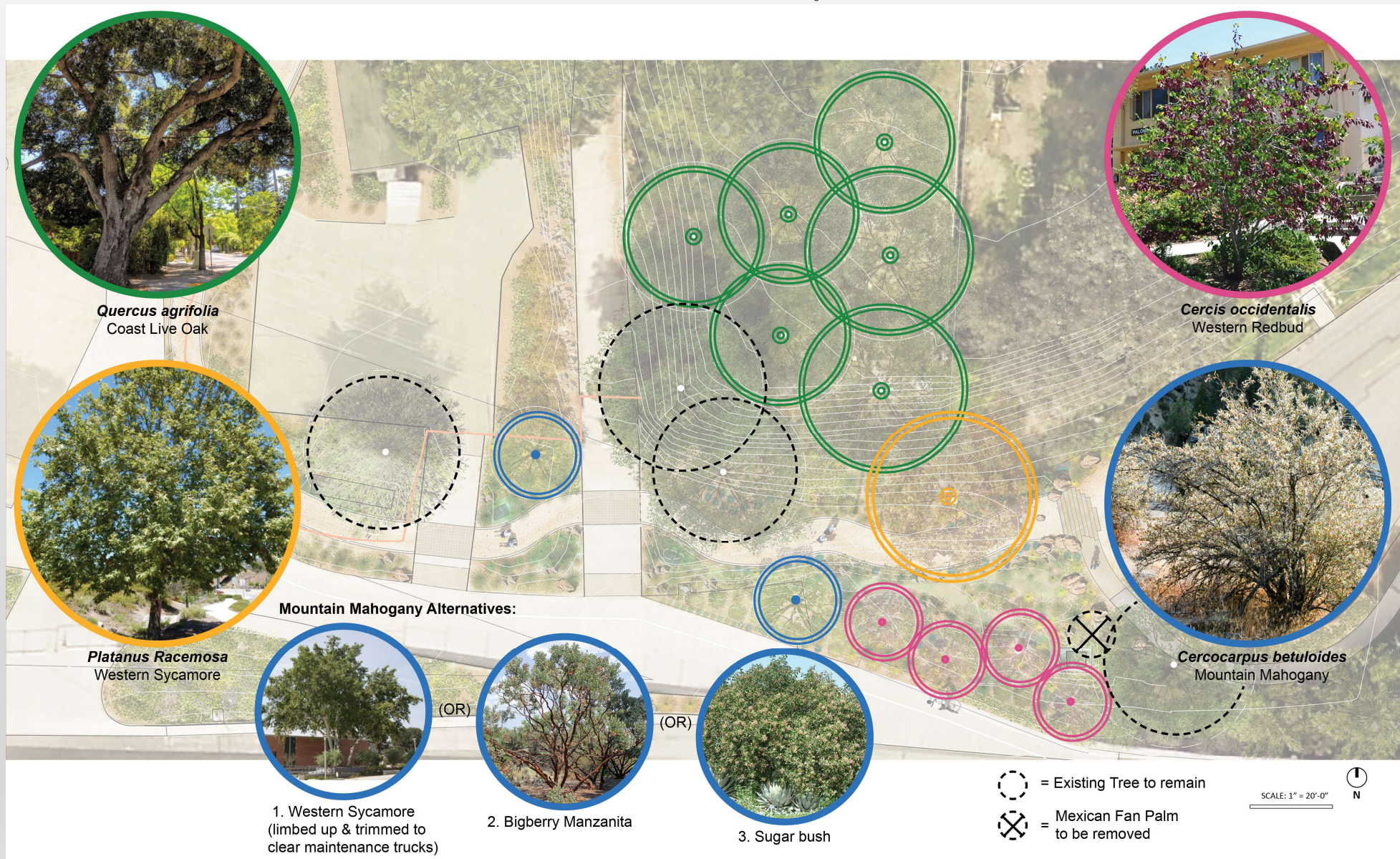
## Native Plant Communities





# Taking a Community-First Approach

## Native Tree Species







# Taking a Community-First Approach

## Native Plant Communities

### DEVIL'S GATE DAM ENTRANCE - SAGE SCRUB PLANT PALETTE OPTIONS



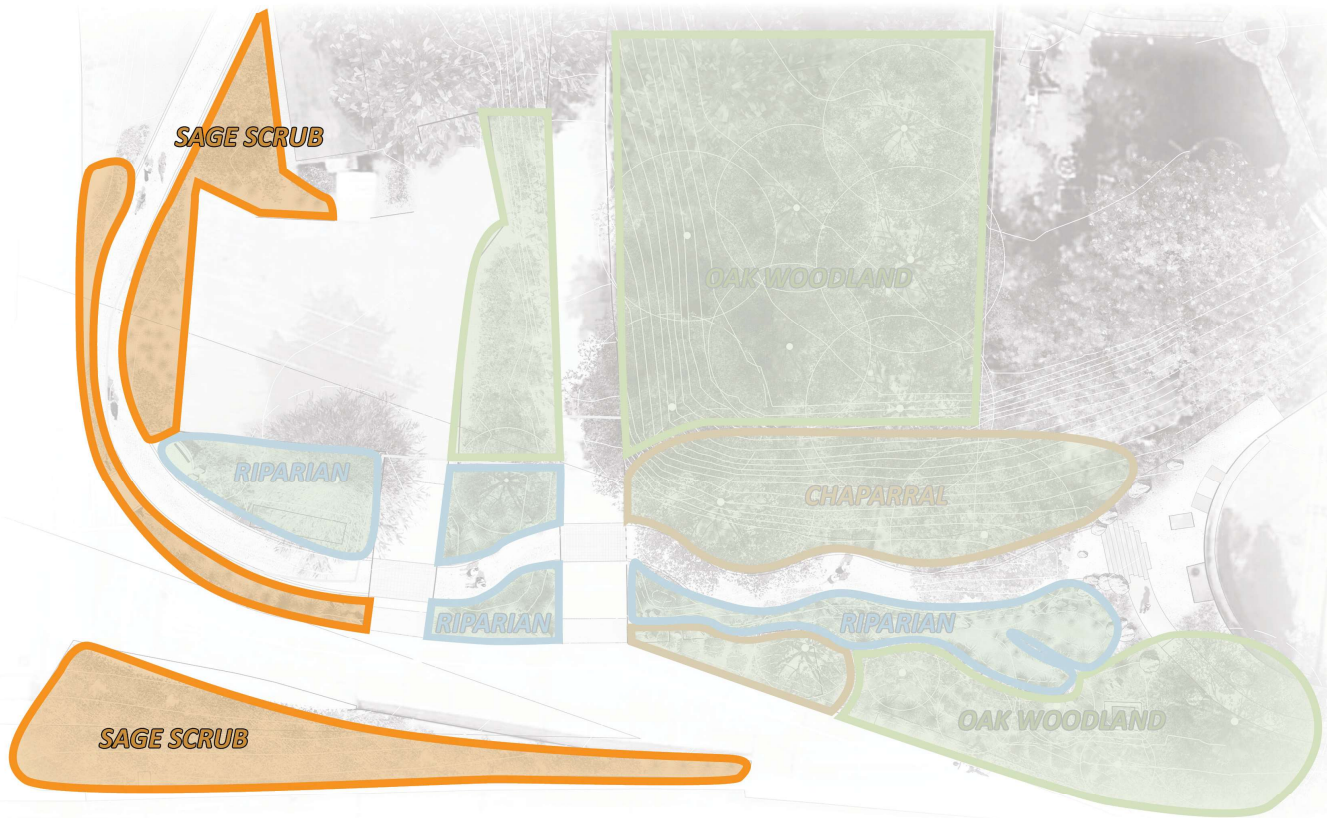
***Artemisia californica***  
California Sagebrush  
Height: 3' - 5'



***Encelia californica***  
Bush Sunflower  
Height: 3' - 5'



***Encelia farinosa***  
California Brittlebrush  
Height: 3' - 5'



***Eriogonum fasciculatum***  
California Buckwheat  
Height: 2' - 3'



***Salvia apiana***  
White Sage  
Height: 3' - 4'



***Salvia leucophylla***  
Purple Sage  
Height: 3' - 4'



# Taking a Community-First Approach

## Oak Grove Existing Conditions

DEVIL'S GATE DAM - TRAFFIC SIGNAGE AND STRIPING  
EXISTING





# Taking a Community-First Approach

## Oak Grove Traffic Enhancements

DEVIL'S GATE DAM - TRAFFIC SIGNAGE AND STRIPING  
PROPOSED

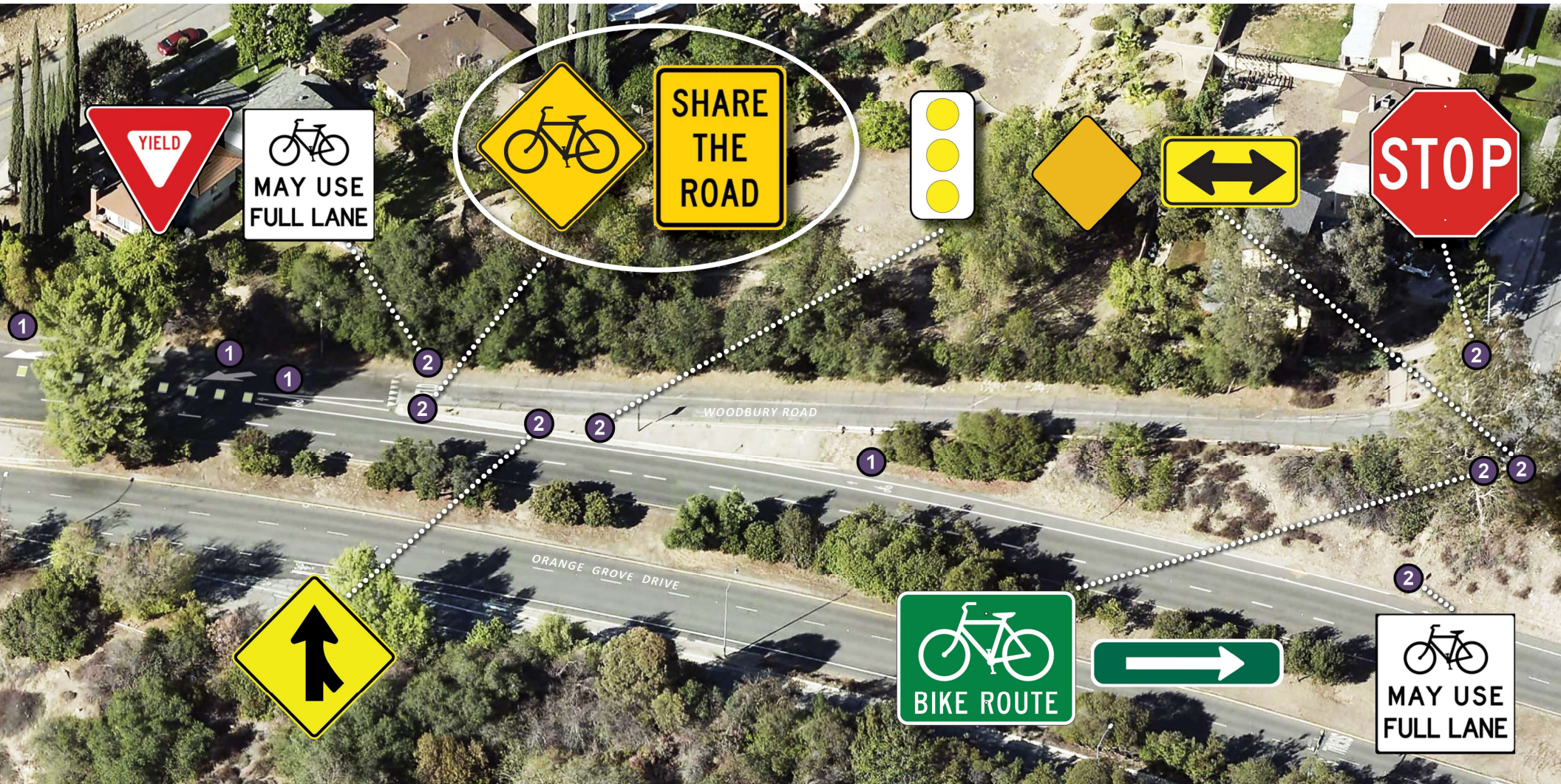


- Bike path striping extended along Oak Grove & enhanced signage



# Taking a Community-First Approach

## DEVIL'S GATE DAM - TRAFFIC SIGNAGE AND STRIPING



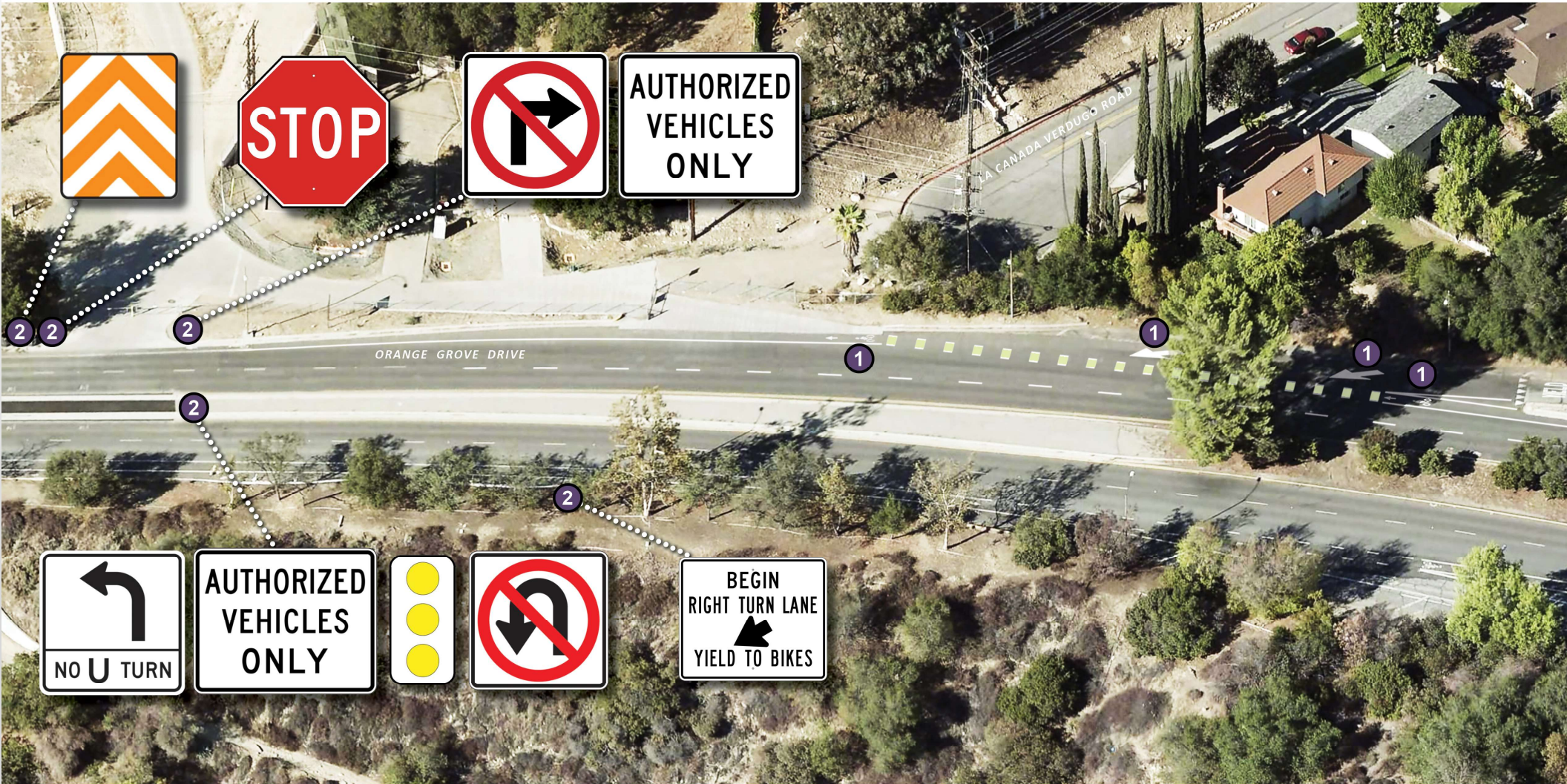
1 New Thermoplastic Pavement Marking (as shown)

2 New Sign (as shown)



# Taking a Community-First Approach

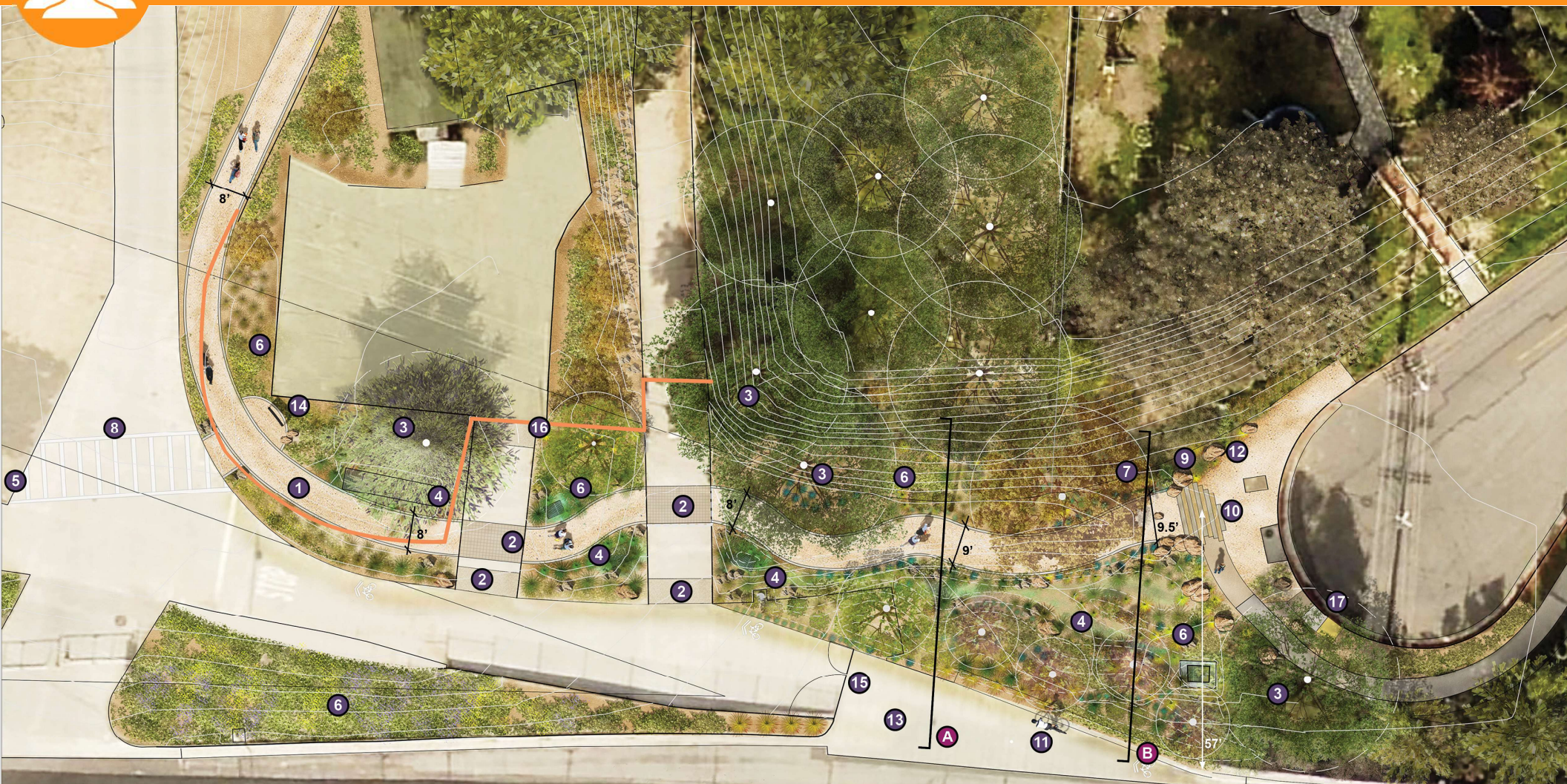
## DEVIL'S GATE DAM - TRAFFIC SIGNAGE AND STRIPING



- 1 New Thermoplastic Pavement Marking (as shown)
- 2 New Sign (as shown)



# Taking a Community-First Approach



- 1 Decomposed Granite Path    3 Existing Tree. Protect in place    5 Updated Entrance Sign    7 Wayfinding / Interpretive Signage
  - 2 Colored Concrete Crossing    4 Bio-Swale    6 Drought-tolerant and Native Plants    8 Striped Crossing
  - 9 Boulder as Bollard    11 Shared Bike Route    13 Slip Road for Maintenance    15 New Gate
  - 10 Colored Concrete    12 Decomposed Granite    14 Community Kiosk    16 Existing fence
  - 17 ADA Accessible Curb Ramp
- SCALE: 1" = 20'-0"    N

- Estimated Start of Construction – Winter 2024

- ~5 Months for Construction



# Taking a Community-First Approach

## Southeast Entrance Improvements

### Open Discussion

- Remain muted
- Click Reactions & Raise Hand Feature and wait to be called upon before unmuting, \*9 for phone call-ins, \*6 to unmute
- Remain on topic – This is for the Southeast Entrance!
- Alternatively - Type discussion point in the chat
- Don't worry if you aren't called on! Comments can be submitted via [Devilsgateproject@pw.lacounty.gov](mailto:Devilsgateproject@pw.lacounty.gov)



# Talk to Us

- Submit comments to [devilsgateproject@pw.lacounty.gov](mailto:devilsgateproject@pw.lacounty.gov)
- Deadline for comments September 1, 2022
- Presentation is posted on the website
- Public Works will meet with City of Pasadena to finalize the concept and begin the design phase

**Subscribe to our e-mail list to receive updates on the project.**



**DevilsGateProject.com**



**devilsgateproject@pw.lacounty.gov**



**Hotline: (626) 458-2507**