

September 7, 2006

TO: Rod H. Kubomoto

FROM: Patricia Wood *PMW*  
Facilities Section

*THANKS, PROCEED AS  
RECOMMENDED Rod 9/12*

**QUAIL FIRE  
BURNED AREA REPORT  
FILE NO. 2-11.40**

The Quail Fire occurred on August 13 to 17, 2006, and burned approximately 4,864 acres, of which 3,535 acres were in the County of Los Angeles. Although the burn area extended into Kern County, this report focuses on impacts to the County of Los Angeles.

Recommendations

1. Notify Road Maintenance Division (RD 556) that they should monitor culverts under Gorman Post Road below the burned area during the next five consecutive storm seasons and clean them as necessary.
2. Authorize us to send a copy of the report to the Los Angeles County Fire Department.

Background

Fire Name: Quail Fire  
Date of Fire: August 13, 2006  
Burned Area: 4,864 acres  
Location: Approximately 0.5 mile north of the intersection of the Golden State (I-5) Freeway and Lancaster Road (State Highway 138) in the Gorman area outside of the Flood Control District boundary. The fire perimeter extended north to Castac Lake in Kern County. Refer to Thomas Guide Page F (2003 Edition). The burned area boundary is plotted on Attachment A.

Summary of Potential Sediment Impact

On August 21, 2006, Water Resources Division staff, accompanied by Deputy Forester Keith J. Deagon of the Los Angeles County Fire Department, conducted a field reconnaissance of the burned area looking for residences and/or County facilities that could be potentially impacted by flooding/debris flows during storms. During a design storm event (50-year frequency), sediment flows from the burned canyons may impact four residences and the County maintained Gorman Post Road below the burn.

Three subarea watersheds where locations of homes that could be potentially affected by mudflows are identified as Subareas 1, 2, and 3 on the burned area map (see Attachment A). The burned area is in Debris Production Area 9.

Subarea 1 watershed has an area of 210 acres and is 100 percent burned. During a major storm, an estimated 3,200 cubic yards of debris (adjusted sediment production due to burn) may be produced. Sediment flow from the canyon may potentially impact the trailer and a water pump/tank located along the flow path. On August 30, 2006, Mr. Avueduto at 39439 Gorman Post Road was provided with mudflow protection advice.

Subarea 2 has an area of 382 acres and is 100 percent burned. During a major storm, an estimated 5,000 cubic yards of debris (adjusted sediment production due to burn) may be produced. Nuisance mudflow is anticipated to flow along a swale, which exists along the back of the residential lot at 38833 Gorman Post Road within the subarea. If the swale becomes filled with debris, nuisance material could overflow onto the driveway. On August 30, 2006, a mudflow engineering advice form recommending the resident to keep the swale clean after a storm was left at the front door of the residence.

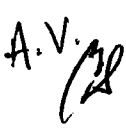
Subarea 3 has an area of 360 acres and is 100 percent burned. During a major event, an estimated 4,700 cubic yards of debris (adjusted sediment production due to burn) may be produced. Mudflow material is anticipated to flow down the canyon and subject the water pump at 38011 Gorman Post Road and the horse corrals at 38101 Gorman Post Road to damage and sediment deposition (see Attachment A). Also, a small steep canyon above the residence at 38011 Gorman Post Road may convey debris to the backyard during a major storm. On August 30, 2006, both residences were provided with mudflow protection advice.

Various culverts exist below the burn along the County maintained Gorman Post Road. Potential flooding at culvert crossings and sediment deposition on the road are anticipated during storms. Road Maintenance Division was informed on the potential impacts to their facilities.

The approved Burned Area Report will be posted on the Internet at <http://www.ladpw.org/WRD/FIRE/>.

Rod H. Kubomoto  
September 7, 2006  
Page 3

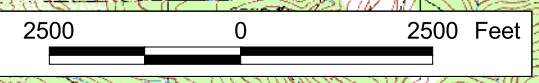
If you have any questions regarding this fire report, please contact Arevik Vardanyan at 458-6115 or Loreto Soriano at 458-6145.

A.V.  


AV:vt <sup>LPS</sup>  
P:\wrd\GENERAL\Arevik\quail-bar-1.doc

Attach.

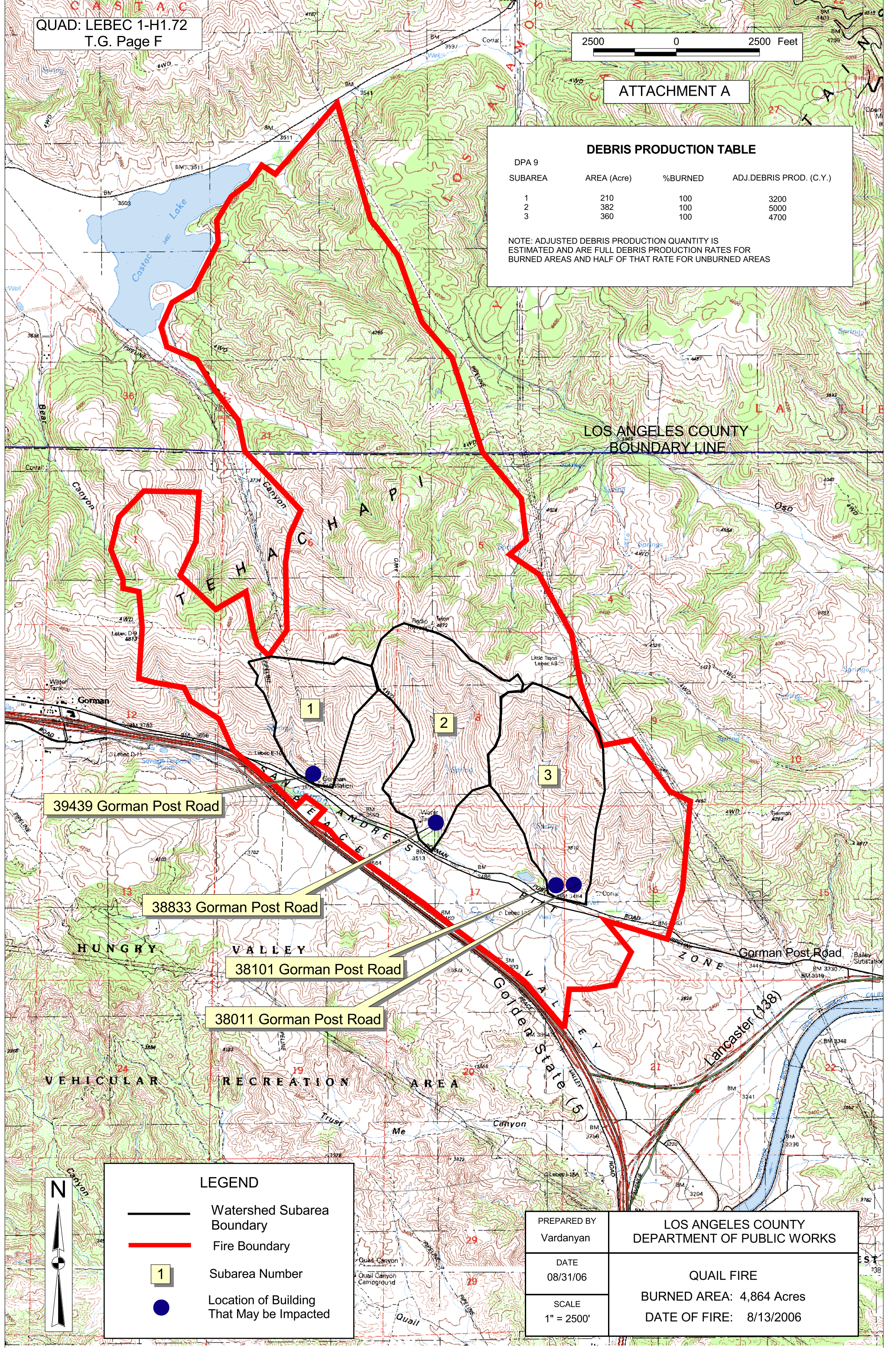
cc: Disaster Services (Dai Bui)  
Road Maintenance (RD 556)  
Water Resources (Walden, Soriano, Files)



ATTACHMENT A

DPA 9 SUBAREA	AREA (Acre)	%BURNED	ADJ.DEBRIS PROD. (C.Y.)
1	210	100	3200
2	382	100	5000
3	360	100	4700

NOTE: ADJUSTED DEBRIS PRODUCTION QUANTITY IS ESTIMATED AND ARE FULL DEBRIS PRODUCTION RATES FOR BURNED AREAS AND HALF OF THAT RATE FOR UNBURNED AREAS



39439 Gorman Post Road

38833 Gorman Post Road

38101 Gorman Post Road

38011 Gorman Post Road



	Watershed Subarea Boundary
	Fire Boundary
	Subarea Number
	Location of Building That May be Impacted

PREPARED BY Vardanyan
DATE 08/31/06
SCALE 1" = 2500'

LOS ANGELES COUNTY DEPARTMENT OF PUBLIC WORKS
QUAIL FIRE
BURNED AREA: 4,864 Acres
DATE OF FIRE: 8/13/2006