

**DEBRIS PRODUCTION TABLE**

**DPA 3 & 5**

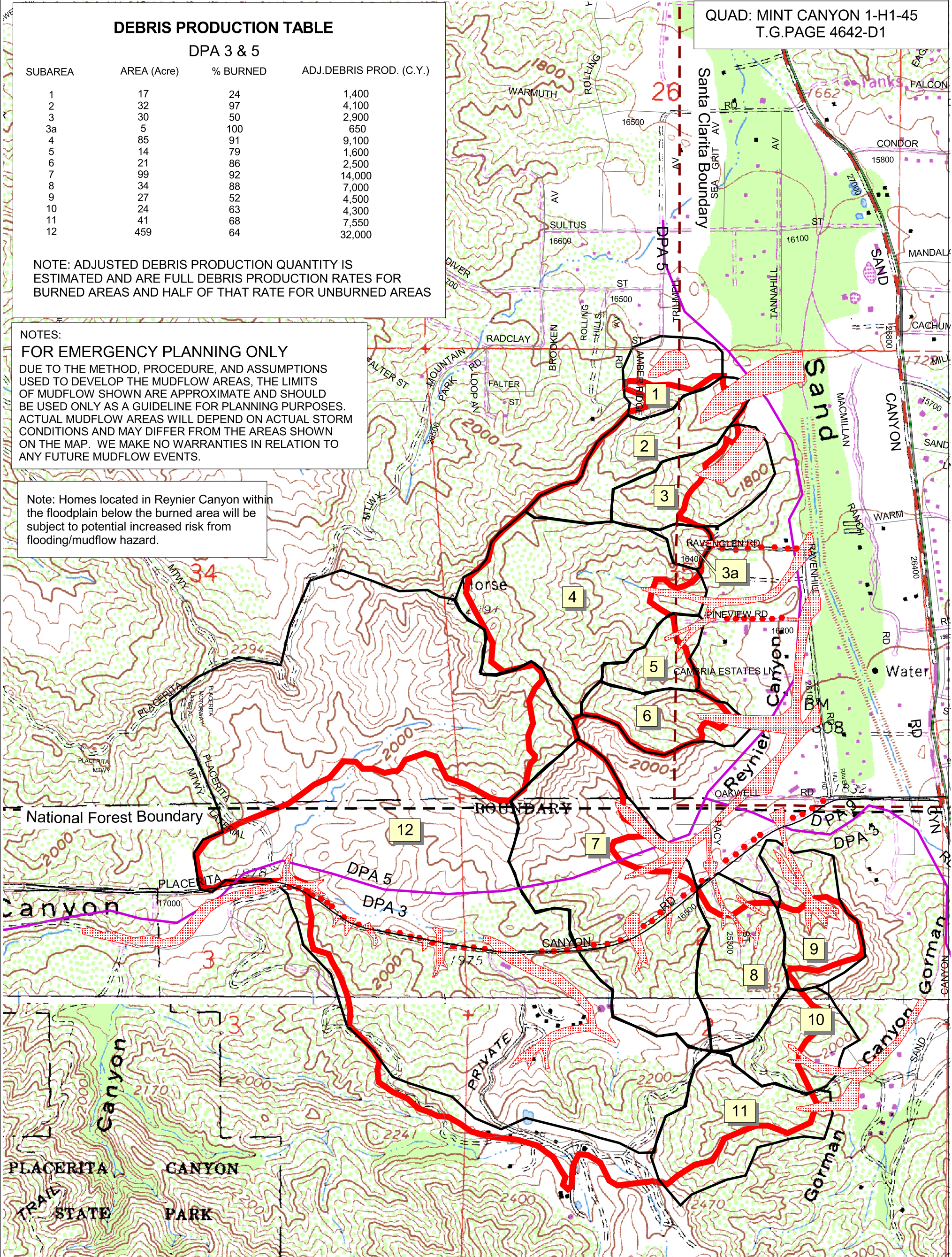
SUBAREA	AREA (Acre)	% BURNED	ADJ.DEBRIS PROD. (C.Y.)
1	17	24	1,400
2	32	97	4,100
3	30	50	2,900
3a	5	100	650
4	85	91	9,100
5	14	79	1,600
6	21	86	2,500
7	99	92	14,000
8	34	88	7,000
9	27	52	4,500
10	24	63	4,300
11	41	68	7,550
12	459	64	32,000

NOTE: ADJUSTED DEBRIS PRODUCTION QUANTITY IS ESTIMATED AND ARE FULL DEBRIS PRODUCTION RATES FOR BURNED AREAS AND HALF OF THAT RATE FOR UNBURNED AREAS

**NOTES:  
FOR EMERGENCY PLANNING ONLY**

DUE TO THE METHOD, PROCEDURE, AND ASSUMPTIONS USED TO DEVELOP THE MUDFLOW AREAS, THE LIMITS OF MUDFLOW SHOWN ARE APPROXIMATE AND SHOULD BE USED ONLY AS A GUIDELINE FOR PLANNING PURPOSES. ACTUAL MUDFLOW AREAS WILL DEPEND ON ACTUAL STORM CONDITIONS AND MAY DIFFER FROM THE AREAS SHOWN ON THE MAP. WE MAKE NO WARRANTIES IN RELATION TO ANY FUTURE MUDFLOW EVENTS.

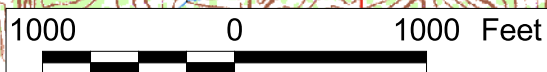
Note: Homes located in Reynier Canyon within the floodplain below the burned area will be subject to potential increased risk from flooding/mudflow hazard.



**LEGEND**

- Subarea Watershed Boundary
- Fire Boundary
- Subarea Number
- Mudflow on Street
- Mudflow Hazard Area

ATTACHMENT C-3



PREPARED BY  
VARDANYAN

DATE  
11/08/06

SCALE  
1" = 1000'

LOS ANGELES COUNTY  
DEPARTMENT OF PUBLIC WORKS

CROSS FIRE  
BURNED AREA: 644 ACRES  
DATE OF FIRE: 8/28-30/2006

PHASE 3  
POTENTIAL MUDFLOW IMPACT AREAS  
GREATER THAN 0.75 DESIGN DEBRIS EVENT