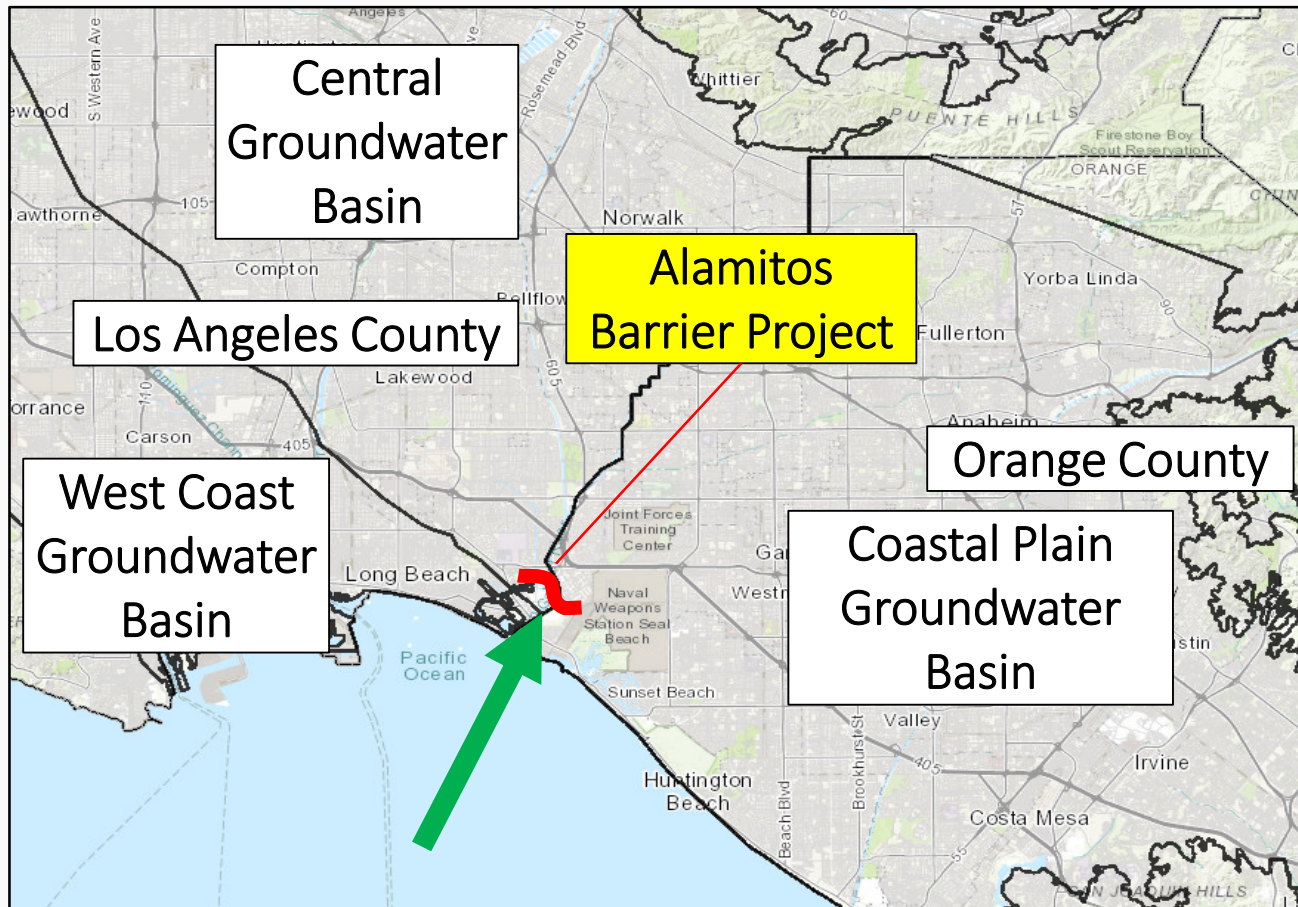




Alamitos Barrier Project Unit 15
5 Replacement Injection Wells
2 New Observation Wells

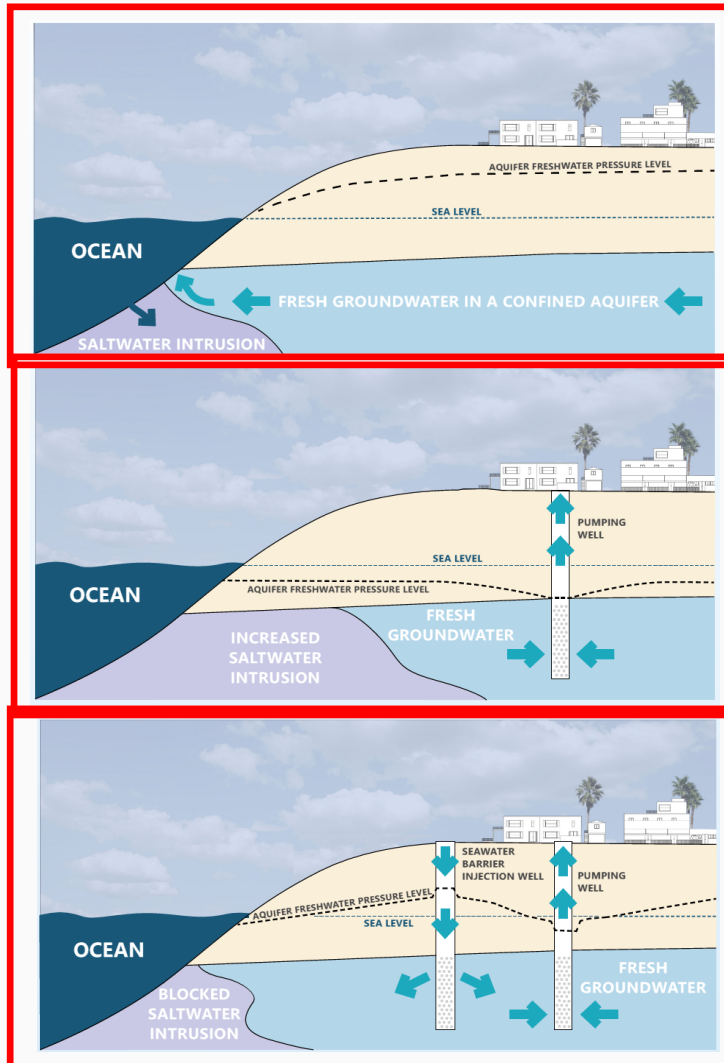
Presented by: Paul Boice

Groundwater Basins of Los Angeles & Orange County



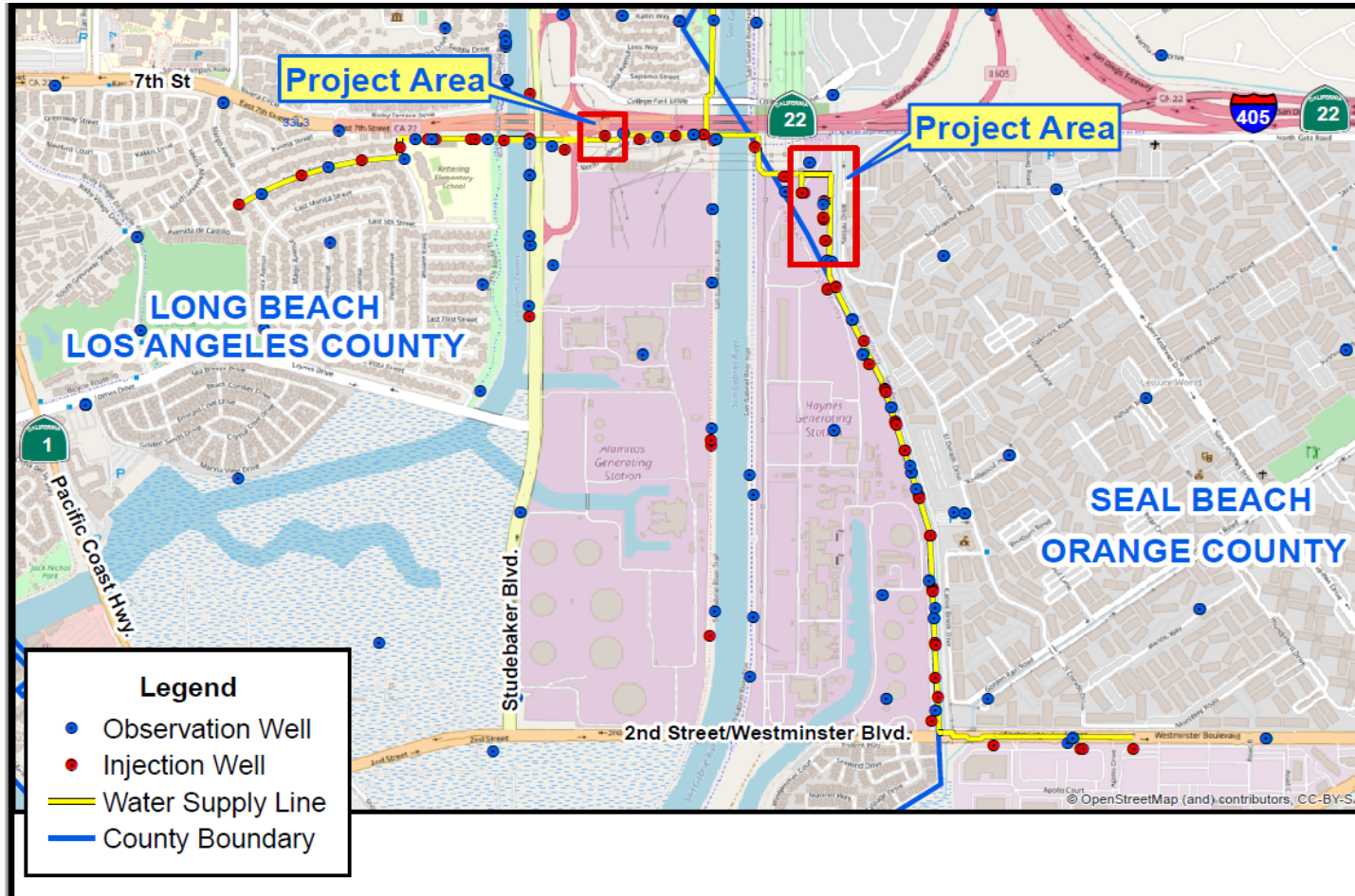
Map from California Department of Water Resources (sgma.water.ca.gov)

Sustainable Groundwater Supply

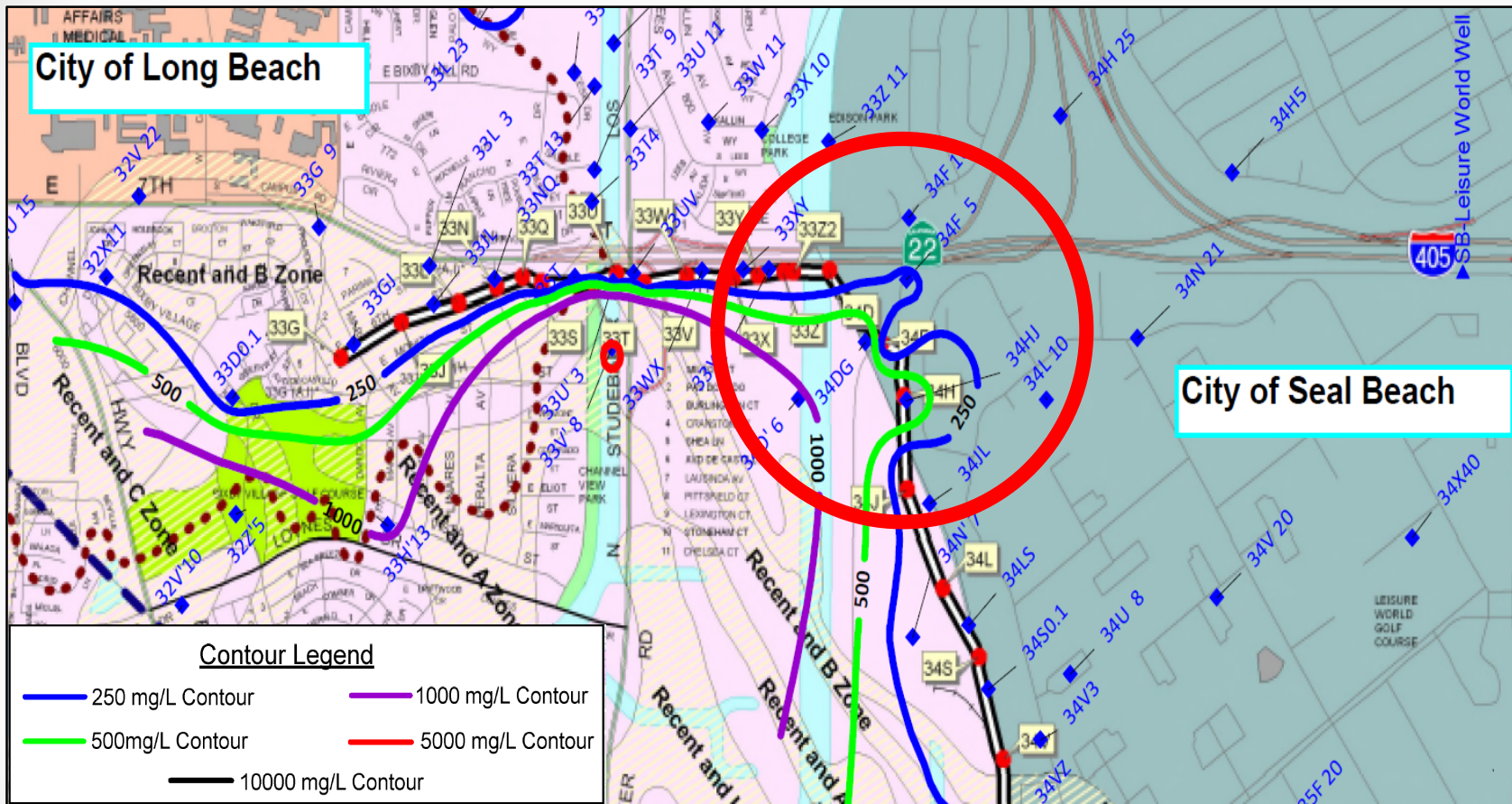


- Under normal conditions there is enough freshwater pressure to keep seawater at bay.
- Heavy pumping can increase rate and distance of intrusion.
- Seawater intrusion barriers can block inflow of salt water and replenish the basins with fresh water.

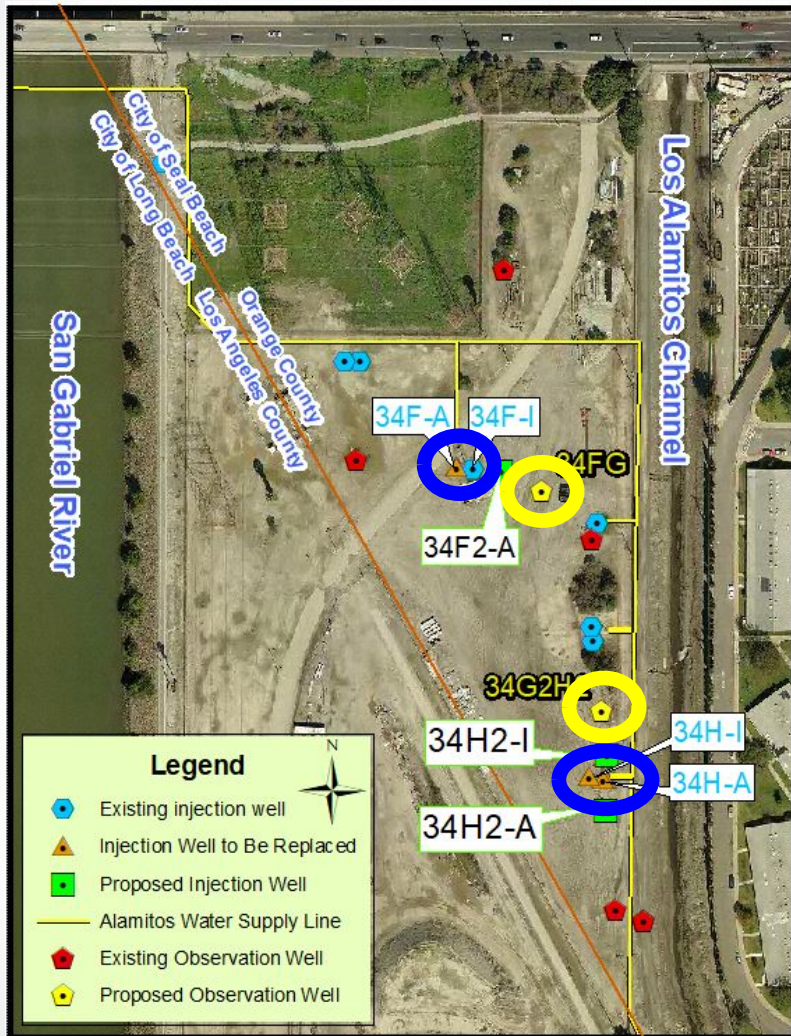
Alamitos Barrier Project Overview



Chloride Contours



Project Construction

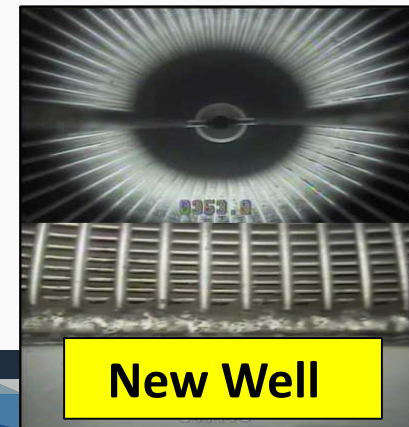


Project Overlook:

- Replace 3 aging injection wells for increased seawater intrusion protection.
- Construct 2 new observation well for water quality monitoring.
- Install conduits to each well for remote monitoring (telemetry system).

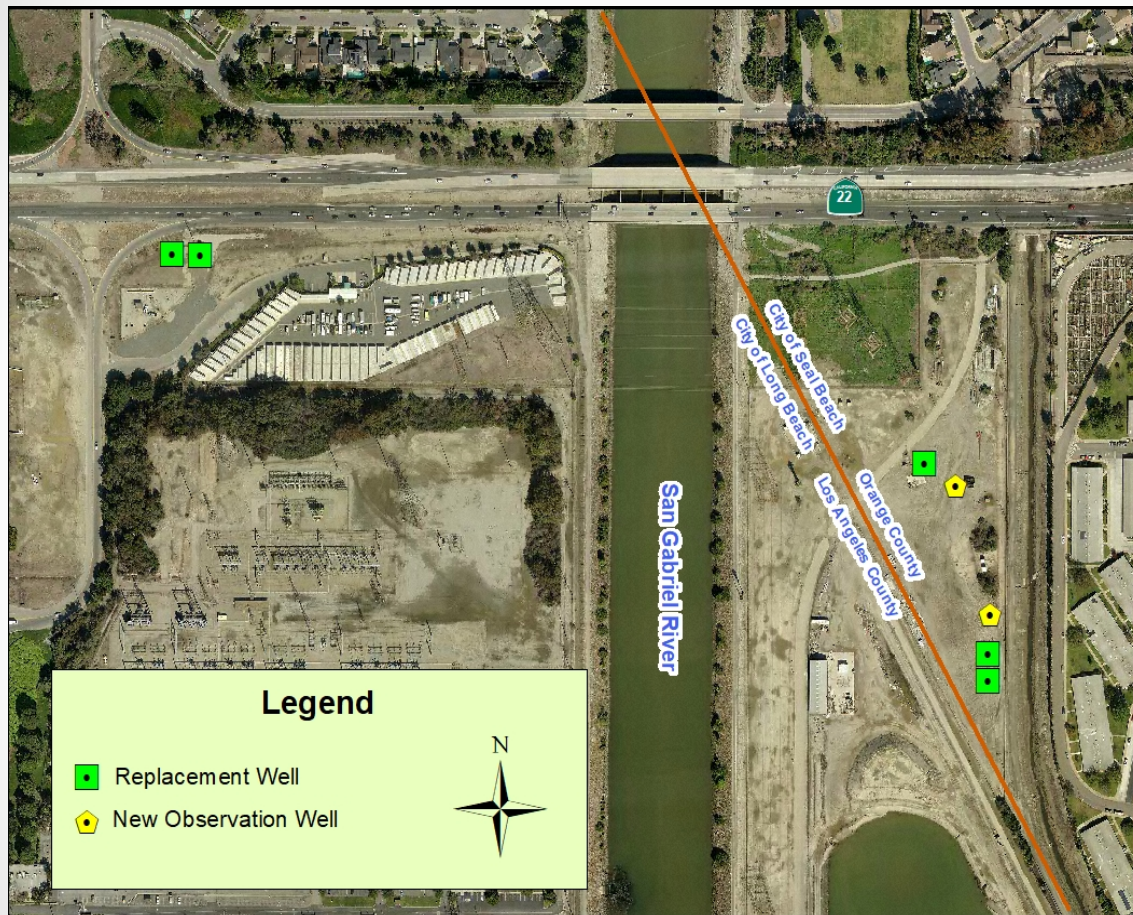


Existing Well



New Well

New Injection & Observation Wells



Proposition 1 Groundwater Grant Funding:

- Water Quality, Supply, and Infrastructure Improvement Act of 2014.
- Allocated \$900 million for projects that preserve groundwater.
- Project awarded \$4.2 million in October 2019.

Construction Schedule

Estimated Schedule:

TASK	START	FINISH
Design	Apr 2020	Jun 2021
Award	Sep 2021	Nov 2021
Construction	Feb 2022	Oct 2022



Questions?

For More Information:

Subscribe to our e-mail list to receive updates on the project.



seawaterbarrier.com



swb@dpw.lacounty.gov



[@LACoPublicWorks](https://twitter.com/LACoPublicWorks)

Project Manager

Mr. Paul Boice

Monday through Thursday, 7 a.m.
to 4 p.m. at: **(626) 458-6162** or

pboice@pw.lacounty.gov