

August 9, 2006

TO: Rod H. Kubomoto

FROM: Patricia Wood
Facilities Section

*Noted
8-15-06*

**CALGROVE FIRE
BURNED AREA REPORT *PAW*
FILE NO. 2-11.40**

Recommendations

1. No further action by Public Works is necessary.
2. Authorize us to send a copy of the burned area report to Caltrans as confirmation of the potential impacts to its facilities.

Background

Fire Name: Calgrove Fire
Date of Fire: July 22, 2006
Burned Area: 41 acres
Location: Calgrove Boulevard near the Golden State (5) Freeway in the City of Santa Clarita and unincorporated County of Los Angeles territory. Refer to Thomas Guide Page 4640-G5 (2003 Edition). The burned area boundary is plotted on Attachment A.

Summary of Potential Sediment Impact

On July 27, 2006, Water Resources Division staff conducted a field reconnaissance on the burned area looking for residences and/or County facilities that could be potentially impacted by flooding/debris flows during storms. During a design storm event (50-year frequency), debris material from the burned area will flow directly into the low lying regions at the mouth of the canyons where culverts maintained by Caltrans exist. If the inlets become plugged, the mudflow debris produced by the fire is anticipated to remain in the low lying regions and not produce any adverse effects. There are no County facilities or residents that could be impacted by storm produced debris flows.

The approved Burned Area Report will be posted on the Internet at <http://www.ladpw.org/WRD/FIRE/>.

Rod H. Kubomoto
August 9, 2006
Page 2

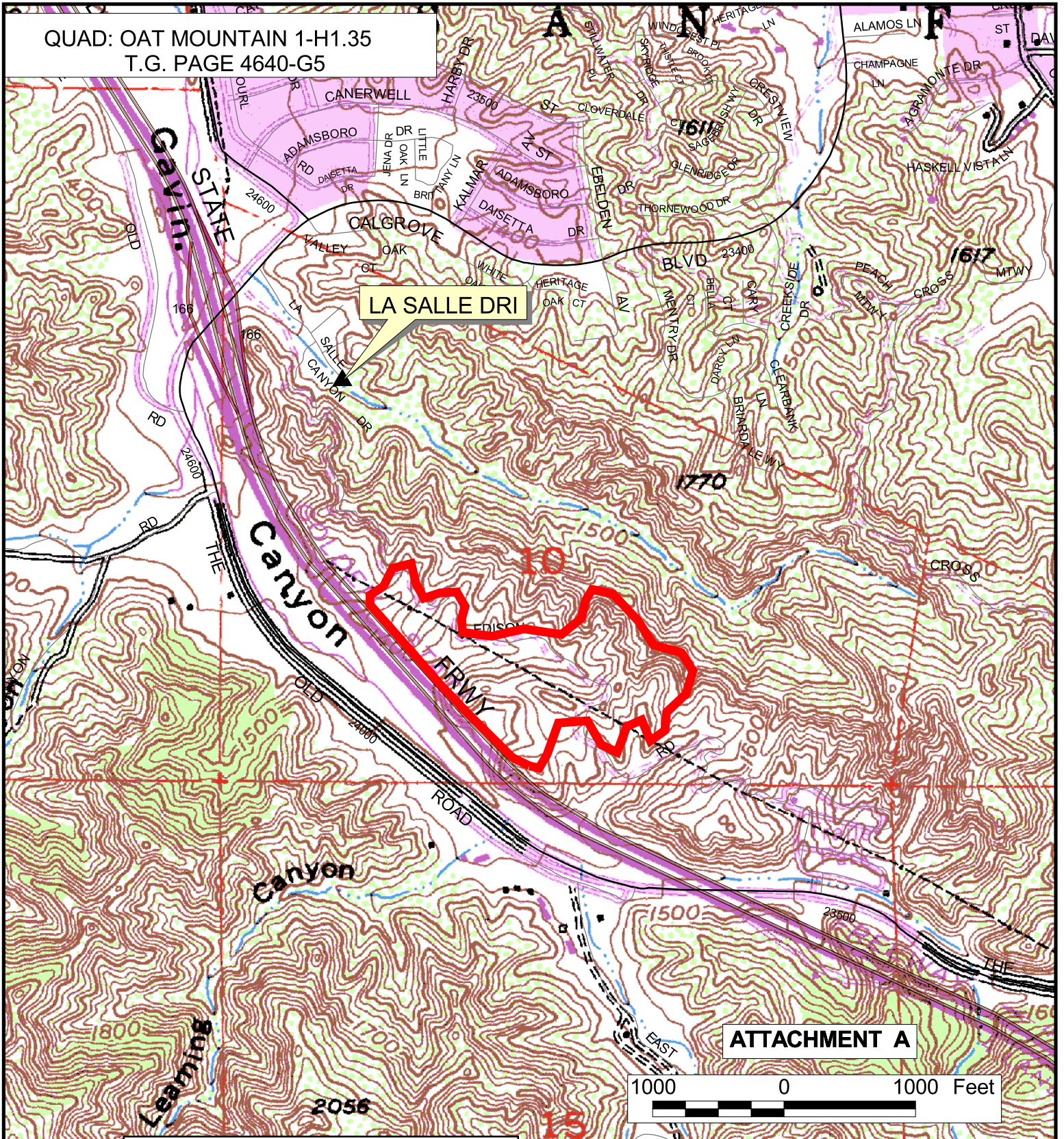
If you have any questions regarding this fire report, please contact Arevik Vardanyan at 458-6115 or William Saunders at 458-6187.

A.V. WS AV:yg LPS
P:\wrd\GENERAL\Arevik\calgrove-bar-1.doc

Attach.



cc: Disaster Services (Dunn)
Flood Maintenance (West Area)
Water Resources (Walden, Wood, Soriano, Saunders, Files)

QUAD: OAT MOUNTAIN 1-H1.35
T.G. PAGE 4640-G5



ATTACHMENT A



LEGEND	
	Fire Boundary
	Debris Retaining Structure

PREPARED BY VARDANYAN	LOS ANGELES COUNTY DEPARTMENT OF PUBLIC WORKS CALGROVE FIRE BURNED AREA: 41 Acres DATE OF FIRE: 7/22/06
DATE 08/03/06	
SCALE 1" = 1000'	