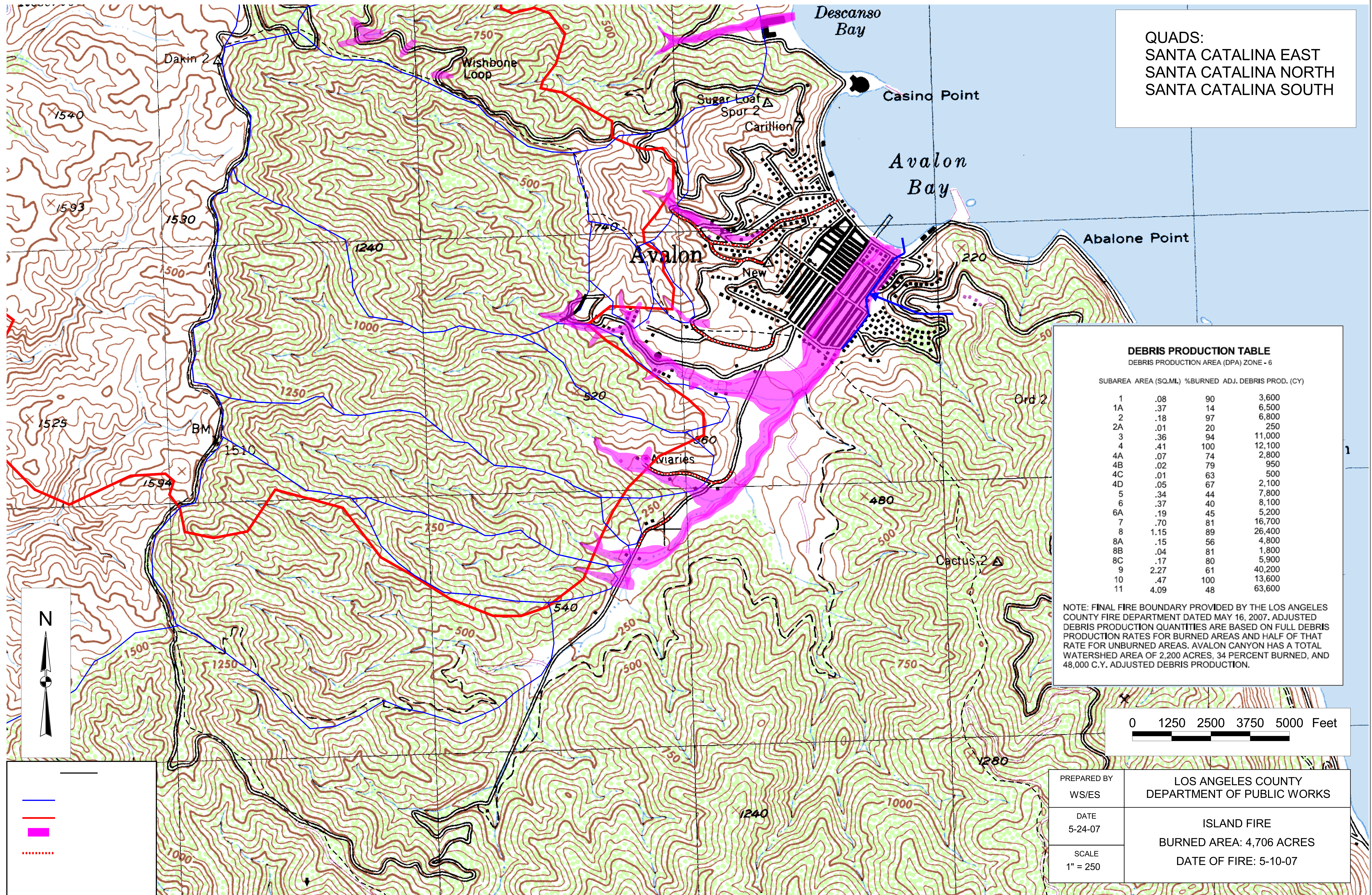


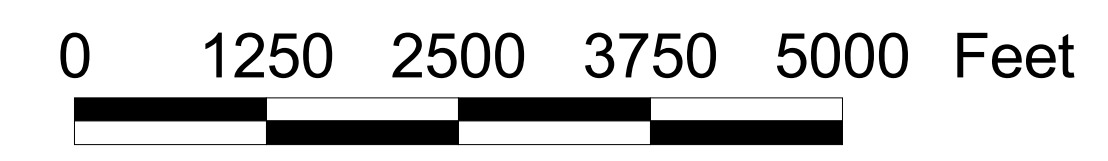
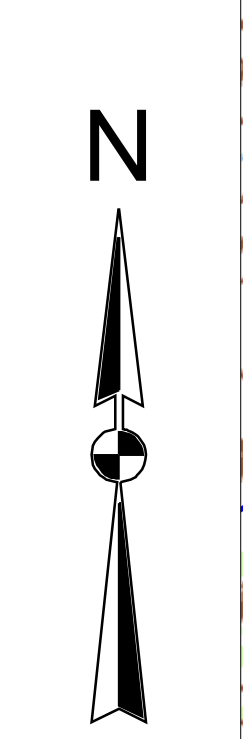
QUADS:  
 SANTA CATALINA EAST  
 SANTA CATALINA NORTH  
 SANTA CATALINA SOUTH



**DEBRIS PRODUCTION TABLE**  
 DEBRIS PRODUCTION AREA (DPA) ZONE - 6

SUBAREA	AREA (SQ.MI.)	%BURNED	ADJ. DEBRIS PROD. (CY)
1	.08	90	3,600
1A	.37	14	6,500
2	.18	97	6,800
2A	.01	20	250
3	.36	94	11,000
4	.41	100	12,100
4A	.07	74	2,800
4B	.02	79	950
4C	.01	63	500
4D	.05	67	2,100
5	.34	44	7,800
6	.37	40	8,100
6A	.19	45	5,200
7	.70	81	16,700
8	1.15	89	26,400
8A	.15	56	4,800
8B	.04	81	1,800
8C	.17	80	5,900
9	2.27	61	40,200
10	.47	100	13,600
11	4.09	48	63,600

NOTE: FINAL FIRE BOUNDARY PROVIDED BY THE LOS ANGELES COUNTY FIRE DEPARTMENT DATED MAY 16, 2007. ADJUSTED DEBRIS PRODUCTION QUANTITIES ARE BASED ON FULL DEBRIS PRODUCTION RATES FOR BURNED AREAS AND HALF OF THAT RATE FOR UNBURNED AREAS. AVALON CANYON HAS A TOTAL WATERSHED AREA OF 2,200 ACRES, 34 PERCENT BURNED, AND 48,000 C.Y. ADJUSTED DEBRIS PRODUCTION.



Legend:

- Road
- Fire Boundary
- Burned Area
- ⋯ Dotted Line

PREPARED BY WS/ES	LOS ANGELES COUNTY DEPARTMENT OF PUBLIC WORKS
DATE 5-24-07	ISLAND FIRE BURNED AREA: 4,706 ACRES
SCALE 1" = 250	DATE OF FIRE: 5-10-07