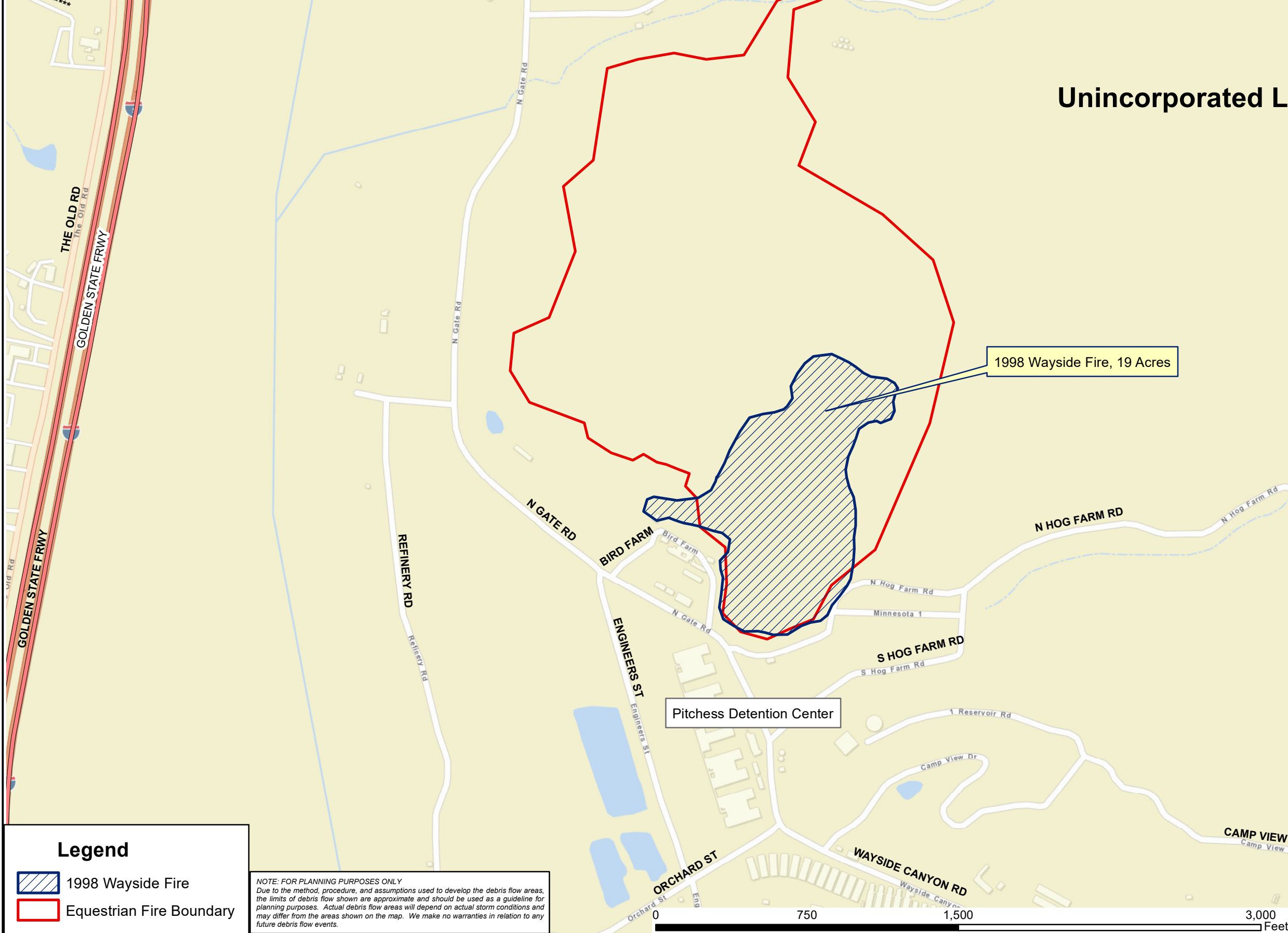


Fire History			
Name	Year	Burned Area (Acres)	Overlapped with Equestrian Fire
Wayside Fire	1998	19	95%



Unincorporated Los Angeles County



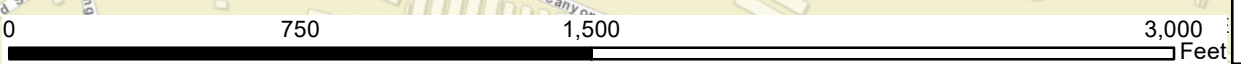
1998 Wayside Fire, 19 Acres

Pitchess Detention Center


Legend

- 1998 Wayside Fire
- Equestrian Fire Boundary

NOTE: FOR PLANNING PURPOSES ONLY
 Due to the method, procedure, and assumptions used to develop the debris flow areas, the limits of debris flow shown are approximate and should be used as a guideline for planning purposes. Actual debris flow areas will depend on actual storm conditions and may differ from the areas shown on the map. We make no warranties in relation to any future debris flow events.



Attachment B



DATE 8/11/20	Equestrian Fire History Map
Prepared by Schung	BURNED AREA: +/- 88 ACRES DATE OF FIRE: 6/08/2020